



## 2016 COMMUNITY HEALTH NEEDS ASSESSMENT



Community Benefit Manager: Craig Bair [craig.bair@ahss.org](mailto:craig.bair@ahss.org)

## TABLE OF CONTENTS

<b>1. EXECUTIVE SUMMARY</b>	<b>3</b>
<b>2. HOSPITAL DESCRIPTION</b>	<b>5</b>
<b>3. CHOOSING THE COMMUNITY</b>	<b>5</b>
<b>4. COMMUNITY DESCRIPTION &amp; DEMOGRAPHICS</b>	<b>6</b>
<b>5. VOLUSIA COUNTY COMMUNITY HEALTH NEEDS ASSESSMENT PARTNERSHIP</b>	<b>28</b>
<b>6. PUBLIC HEALTH</b>	<b>30</b>
<b>7. PRIMARY &amp; SECONDARY DATA SOURCES</b>	<b>31</b>
<b>8. COMMUNITY COLLABORATION</b>	<b>33</b>
<b>9. ASSET INVENTORY</b>	<b>34</b>
<b>10. DATA SUMMARY &amp; PRIORITY SELECTION</b>	<b>34</b>
<b>11. KEY ISSUES TO BE ADDRESSED</b>	<b>35</b>
<b>12. ISSUES THAT WILL NOT BE ADDRESSED</b>	<b>35</b>
<b>13. NEXT STEPS</b>	<b>35</b>
<b>14. WRITTEN COMMENT</b>	<b>35</b>
<b>15. REVIEW OF THE STRATEGIES UNDERTAKEN IN THE 2013 COMMUNITY HEALTH PLAN</b>	<b>35</b>

<b>APPENDIX A: COMMUNITY HEALTH SURVEY (SECTION 7)</b>	<b>36</b>
<b>APPENDIX B: COMMUNITY MEETING ATTENDEES</b>	<b>49</b>
<b>APPENDIX C: FULL ASSET INVENTORY (SECTION 9)</b>	<b>52</b>

## 1. Executive Summary: The Community Health Needs Assessment Process

Florida Hospital New Smyrna (the Hospital) is one of five Florida Hospital facilities in Volusia County, Florida. Florida Hospital's Volusia County facilities include Florida Hospitals DeLand, Fish Memorial, Memorial Medical Center, Oceanside and New Smyrna (formerly Bert Fish Hospital).

Florida Hospital (five facilities) in Volusia County is part of the 2016 Volusia County Community Health Needs Assessment Partnership. Other Partnership members include the Florida Department of Health-Volusia, Halifax Health (a government hospital), and One Voice for Volusia (community nonprofit). All Partnership members including the five Florida Hospitals define Volusia County as their primary service area.

In 2016, the Partnership conducted a Volusia County Community Health Needs Assessment. For Florida Hospital, this Assessment is considered to be a joint, **regional Community Health Needs Assessment** for the five Florida Hospital facilities in Volusia County.

Florida Hospital then used the regional Needs Assessment to develop facility-specific Community Health Needs Assessment documents for each facility. This document is the facility-specific assessment for Florida Hospital Memorial Medical Center.

The reader will note that this Florida Hospital Memorial Medical Center document aligns with the regional Community Health Needs Assessment. It also discusses the immediate community around Florida Hospital Memorial Medical Center in order to demonstrate an understanding of the specific Memorial Medical Center community.

*The regional 2016 Volusia County Community Health Needs Assessment is also posted on this web page.*

### Goals

Florida Hospital New Smyrna and the other Florida Hospital facilities in Volusia County partnered with Florida Department of Health-Volusia, Halifax Health, Bert Fish Medical Center and One Voice for Volusia as the Volusia County Community Health Needs Assessment Partnership to conduct a Community Health Needs Assessment in 2015-2016. The goals of the assessment were to:

- Engage public health and community stakeholders including low-income, minority and other underserved populations
- Assess and understand the community's health issues and needs
- Understand the health behaviors, risk factors and social determinants that impact health
- Identify community resources and collaborate with community partners
- Publish this Community Health Needs Assessment
- Use Assessment findings to develop and implement a 2016-2019 countywide Community Health Plan (implementation strategy) based on the community's prioritized issues. (the countywide Community Health Plan includes the strategies included in each partners' individual Community Health Plan, including Florida Hospital New Smyrna)

### Methods for Engaging the Community in the Assessment

In order to assure broad community input, Florida Hospital and the Volusia County Community Health Needs Assessment Partnership created a multi-tiered approach to stakeholder involvement. Specifically,

1. The plan included the formation of a **Leadership Team** that included 45 leaders from 15 organizations representing key sectors of the public health system as well as low-income, minority and other underserved populations. The Leadership Team was tasked with guiding the Partnership through the Assessment process. The Leadership Team met three times in 2015 and 2016 to review primary and secondary data, help define the Priority Issues to be addressed in the countywide Community Health Plan, and help develop the Community Health Plans (implementation strategies) for each collaborating hospital facility to address. The assessment process and selection of the priority issues for the Hospital's community was conducted by the Leadership Team. Specific Leadership Team functions included:
  - Review of all primary and secondary data
  - Prioritization of key issues identified in the Assessment
  - Selection of Priority Issues to be addressed by the hospital
  - Assistance with the development of a Community Asset Inventory (see Section 9)
  - Participation in community stakeholder surveys
  - Development of the Community Health Plan (implementation strategies) to address the Priority Issues identified in the Assessment.
2. In addition to the Leadership Team, the 2016 Community Health Needs Assessment process included input from people representing the broad community, as well as low-income, minority and other medically underserved populations. This input was solicited throughout 2016, and was gathered and considered in multiple ways:
  - Community surveys (internet and paper)
  - Community meetings
  - Public Health input and expertise

### **Data**

The Volusia County Leadership Team and the five Florida Hospital facilities in Volusia County collected both primary and secondary data. The primary data included stakeholder input at two community meetings and a community survey with 2,003 respondents. In addition, two community meetings engaged 120 community members and stakeholders. Also, Florida Hospital New Smyrna considered internal hospital utilization data (inpatient and emergency department) to determine their internal priority issues.

The secondary data included public health and other publicly available data from state and nationally recognized data sources.

Much of the primary and secondary data included in this Community Health Needs Assessment was compiled by One Voice for Volusia, the agency contracted by the Partnership to assist with data collection

### **Asset Inventory**

The next step was a Community Asset Inventory. This Inventory was designed to help the Volusia County Partnership (1) understand existing community efforts to address the identified health issues and (2) prevent duplication of efforts as appropriate. The Asset Inventory was created through a web-based Community Input Survey and a Community Meeting, hosted by One Voice for Volusia, with 120 stakeholders participating.

### **Selection Criteria**

Using the data findings and the Community Asset Inventory, the Leadership Team of the Volusia County Partnership narrowed the initial health topics to 14 key health issues. After the community meeting, that

list was narrowed down to five final Priority Health and Health Behavior/Risk Factor Issues (determinants of health).

Next, the Community Health Committee used clearly defined criteria to select the top five Health and Health Behavior/Risk Factor Issues. The criteria included:

- A. How acute is the need? (based on data and community concern)
- B. What is the trend? Is the need getting worse?
- C. Does the hospital provide services that relate to the priority?
- D. Is someone else – or multiple groups – in the community already working on this issue?
- E. If the hospital were to address this issue, are there opportunities to work with community partners?

### **Priority Issues**

The Priority Issues selected by the Community Health Needs Assessment Committee were:

- 1. Adult Behavioral Health
- 2. Youth Mental Health and Behavioral Health
- 3. Chronic Disease: Cardiovascular and Diabetes
- 4. Barriers to Accessing Health Care Services
- 5. Health Eating and Physical Activity

*See Section 11 for an explanation of the five issues chosen. The full list of 14 issues is included in the 2016 Volusia County Community Health Needs Assessment that is also posted on this web site.*

### **Approvals**

The Community Health Needs Assessment findings and selected Priority Issues were approved by the Florida Hospital New Smyrna Hospital Board in Fall 2016. The final Needs Assessment was posted on the hospital's web site prior to December 31, 2016.

### **Next Steps**

Next, the Volusia County Partnership will work with Florida Hospital New Smyrna to develop a measurable 2017-2019 Community Health Plan (implementation strategy) to address the priority issues. The Plan will be completed and posted on the hospital's web site prior to May 15, 2017.

## **2. Hospital Description**

Located in Southeast Volusia County, Florida Hospital New Smyrna is a 112-bed acute care community hospital offering a full range of patient services. Emergency physicians are on staff 24-hours a day, seven days a week. The Imaging Department provides a wide range of diagnostic testing services with premier technology and patient-centered care. The Oncology Department provides life-saving chemotherapy and radiation treatments in an environment where patients and the healing process always come first. The Physical/Occupational/Speech Therapy Department works with patients in a caring atmosphere that helps to restore strength and mobility. The Same Day Surgery Center allows many patients to receive surgery without an overnight hospital stay and less recovery time. Hard-to-heal wounds can be treated in our outpatient Wound Care and Hyperbaric department.

At Florida Hospital New Smyrna, we strive to care for the mind, body and spirit of all of our patients. Our compassionate health care professionals are dedicated to providing patients with the individual attention that they deserve.

### 3. Choosing the Community

Florida Hospital New Smyrna defines its “community” for the purposes of the Community Health Needs Assessment as all of Volusia County, with a special focus on ZIP codes include 32168, 32132, 32141, 32169, and 32759.

### 4. Community Description & Demographics

Florida Hospital New Smyrna’s Primary Service Area ZIP codes include 32168, 32132, 32141, 32169, and 32759.

#### **Volusia County Profile**

Stretching along 47 miles of the Atlantic Coast and west to the St. Johns River lies Volusia County, Florida. Located at the intersection of the I-4 and I-95 corridors, Volusia County is roughly the size of Rhode Island and sits about 50-miles northeast of Orlando, 60 miles north of the Kennedy Space Center, and 90 miles south of Jacksonville. Volusia County is geographically separated into east and west, and in some areas almost literally divided by wetlands. Volusia County has 16 cities--the city of Deltona, on the west, is the largest in population and Daytona Beach, on the east, ranks second, while unincorporated Volusia County makes up about one-fifth of the population.

In 2014, Volusia County’s population increased over the half million mark to 507,531, growing 2.6% since 2010. Children 18 and under made up 18% of the population, while 23.2% of the population were 65 years and older.

According to the U.S. Census Bureau, the Volusia County median income was \$40,818 and 11.7% of all families were living in poverty as last reported in 2014. The poverty indicator jumps to 24.0 % for households with children 18 and under and to 46.9% for female, single head of households with children under 18.

Preliminary Volusia County unemployment statistics for December 2015 have been released by the U.S. Department of Labor, Bureau of Labor Statistics, Local Area Unemployment Statistics Program. They show the civilian labor force at 236,801; total employment at 225,072 and total unemployment at 11,729, indicating an unemployment rate of 5.0 %, formerly at 10.8 % in 2011.

Volusia County is home to nine regionally-accredited colleges and universities and two technical colleges, with over 35,000 students enrolled in a variety of degree and certificate programs. These institutions offer a diverse focus of academic programs and have been recognized by U.S. News and World Report in the 2015 Best Colleges Rankings. 88.9% of Volusia residents have a high school education or higher and 22.5% have a bachelor degree or higher. During the 2015-16 school year, total public school enrollment (PreK-12) was 62,937.

In 2014, the Volusia County population was 83.9% white, 10.5% black and 5.6% other races or multi-racial. 12.2% of the population was Hispanic.

#### **Florida Hospital New Smyrna**

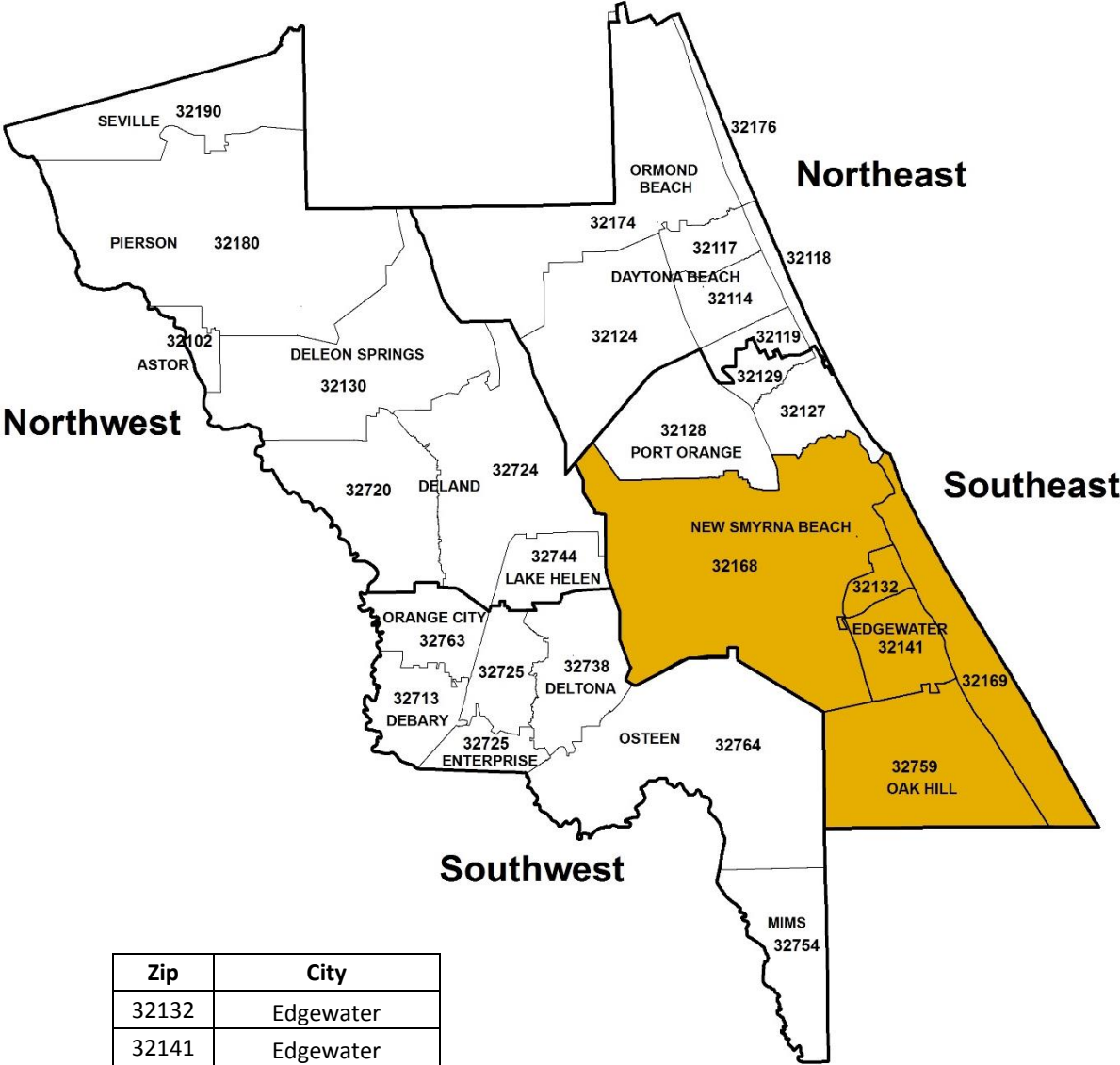
As detailed in the tables on the following pages, residents in some geographic areas of the County and the PSA area suffer disproportionately from key socio-economic and health issues. A summary of those differences is noted below:

- 32759 had a higher rate of families below poverty than the Volusia County (almost double)

- 32759, 32132 and 32141 had higher rates of unemployment than the rest of the County
- 32168 and 32132 had a higher age-adjusted Congestive Heart Failure hospitalization rate than the rest of the County
- 32168 and 32759 had a higher low birth weight rate than the rest of the County.

# Socio-Demographic Data for Florida Hospital New Smyrna

Source: <http://www.nefloridacounts.org/>



Zip	City
32132	Edgewater
32141	Edgewater
32168	New Smyrna Beach
32169	New Smyrna Beach
32759	Oak Hill



## 2016 Population and Population by Sex

Zip Code	City	County	2016 Population	Male	Female
32132	Edgewater	Volusia	7,432	3,604 (48.49%)	3,828 (51.51%)
32141	Edgewater	Volusia	18,270	8,764 (47.97%)	9,506 (52.03%)
32168	New Smyrna Beach	Volusia	25,526	12,373 (48.47%)	13,153 (51.53%)
32169	New Smyrna Beach	Volusia	10,682	5,166 (48.36%)	5,516 (51.64%)
32759	Oak Hill	Volusia	2,745	1,410 (51.37%)	1,335 (48.63%)
Volusia			516,712	251,718 (48.72%)	264,994 (51.28%)
Florida			20,299,288	9,931,093 (48.92%)	10,368,195 (51.08%)

## 2016 Population by Ethnicity

Zip Code	City	County	Hispanic/Latino	Not Hispanic/Latino
32132	Edgewater	Volusia	262 (3.53%)	7,170 (96.47%)
32141	Edgewater	Volusia	632 (3.46%)	17,638 (96.54%)
32168	New Smyrna Beach	Volusia	808 (3.17%)	24,718 (96.83%)
32169	New Smyrna Beach	Volusia	299 (2.80%)	10,383 (97.20%)
32759	Oak Hill	Volusia	52 (1.89%)	2,693 (98.11%)
Volusia			65,488 (12.67%)	451,224 (87.33%)
Florida			4,974,766 (24.51%)	15,324,522 (75.49%)

## 2016 Population by Single Race

Zip Code	City	County	White	Black/ African American	Asian
32132	Edgewater	Volusia	6,942 (93.41%)	208 (2.80%)	62 (0.83%)
32141	Edgewater	Volusia	17,247 (94.40%)	449 (2.46%)	165 (0.90%)
32168	New Smyrna Beach	Volusia	22,928 (89.82%)	1,547 (6.06%)	325 (1.27%)
32169	New Smyrna Beach	Volusia	10,350 (96.89%)	57 (0.53%)	86 (0.81%)
32759	Oak Hill	Volusia	2,378 (86.63%)	288 (10.49%)	15 (0.55%)
Volusia			419,602 (81.21%)	55,982 (10.83%)	9,190 (1.78%)
Florida			14,936,301 (73.58%)	3,321,429 (16.36%)	552,479 (2.72%)

Zip Code	City	County	American Indian/ AK Native	Native HI/Pacific Islander	Some Other Race	2+ Races
32132	Edgewater	Volusia	27 (0.36%)	1 (0.01%)	59 (0.79%)	133 (1.79%)
32141	Edgewater	Volusia	47 (0.26%)	2 (0.01%)	84 (0.46%)	276 (1.51%)
32168	New Smyrna Beach	Volusia	90 (0.35%)	1 (0.00%)	154 (0.60%)	481 (1.88%)
32169	New Smyrna Beach	Volusia	26 (0.24%)	1 (0.01%)	63 (0.59%)	99 (0.93%)
32759	Oak Hill	Volusia	12 (0.44%)	0 (0.00%)	9 (0.33%)	43 (1.57%)
Volusia			1,911 (0.37%)	245 (0.05%)	17,057 (3.30%)	12,725 (2.46%)
Florida			81,742 (0.40%)	14,738 (0.07%)	813,247 (4.01%)	579,352 (2.85%)

## 2016 Population by Age (Under Age 18)

Zip Code	City	County	0 - 4	5 - 9	10 - 14	15 - 17
32132	Edgewater	Volusia	343 (4.62%)	361 (4.86%)	362 (4.87%)	223 (3.00%)
32141	Edgewater	Volusia	767 (4.20%)	805 (4.41%)	862 (4.72%)	545 (2.98%)
32168	New Smyrna Beach	Volusia	1,014 (3.97%)	1,071 (4.20%)	1,142 (4.47%)	760 (2.98%)
32169	New Smyrna Beach	Volusia	255 (2.39%)	280 (2.62%)	266 (2.49%)	168 (1.57%)
32759	Oak Hill	Volusia	118 (4.30%)	130 (4.74%)	129 (4.70%)	66 (2.40%)
Volusia			24,229 (4.69%)	24,985 (4.84%)	26,228 (5.08%)	17,050 (3.30%)
Florida			1,101,372 (5.43%)	1,131,767 (5.58%)	1,161,909 (5.72%)	732,432 (3.61%)

## 2016 Population by Age (Adults)

Zip Code	City	County	18 - 20	21 - 24	25 - 34	35 - 44	45 - 54
32132	Edgewater	Volusia	205 (2.76%)	285 (3.83%)	787 (10.59%)	731 (9.84%)	965 (12.98%)
32141	Edgewater	Volusia	508 (2.78%)	733 (4.01%)	1,658 (9.07%)	1,748 (9.57%)	2,268 (12.41%)
32168	New Smyrna Beach	Volusia	700 (2.74%)	1,020 (4.00%)	2,351 (9.21%)	2,442 (9.57%)	3,395 (13.30%)
32169	New Smyrna Beach	Volusia	176 (1.65%)	266 (2.49%)	708 (6.63%)	719 (6.73%)	1,082 (10.13%)
32759	Oak Hill	Volusia	63 (2.30%)	90 (3.28%)	253 (9.22%)	215 (7.83%)	333 (12.13%)
Volusia			19,172 (3.71%)	24,663 (4.77%)	57,472 (11.12%)	53,568 (10.37%)	66,923 (12.95%)
Florida			758,201 (3.74%)	1,044,473 (5.15%)	2,538,115 (12.50%)	2,440,528 (12.02%)	2,726,373 (13.43%)

## 2016 Population by Age (Older Adults)

Zip Code	City	County	55 - 64	65 - 74	75 - 84	85+
32132	Edgewater	Volusia	1,274 (17.14%)	1,145 (15.41%)	538 (7.24%)	213 (2.87%)
32141	Edgewater	Volusia	2,784 (15.24%)	3,177 (17.39%)	1,826 (9.99%)	589 (3.22%)
32168	New Smyrna Beach	Volusia	4,330 (16.96%)	4,014 (15.73%)	2,339 (9.16%)	948 (3.71%)
32169	New Smyrna Beach	Volusia	2,304 (21.57%)	2,439 (22.83%)	1,440 (13.48%)	579 (5.42%)
32759	Oak Hill	Volusia	563 (20.51%)	495 (18.03%)	236 (8.60%)	54 (1.97%)
Volusia			78,128 (15.12%)	68,694 (13.29%)	38,185 (7.39%)	17,415 (3.37%)
Florida			2,674,449 (13.18%)	2,229,398 (10.98%)	1,224,363 (6.03%)	535,908 (2.64%)

## 2016 Population Over Age 5 by Language Spoken at Home

Zip Code	City	County	Speak Only English at Home	Speak Spanish at Home	Speak Asian/PI Language at Home	Speak Indo-European Language at Home	Speak Other Language at Home
32132	Edgewater	Volusia	6,871 (96.92%)	108 (1.52%)	31 (0.44%)	79 (1.11%)	0 (0.00%)
32141	Edgewater	Volusia	16,877 (96.42%)	480 (2.74%)	7 (0.04%)	139 (0.79%)	0 (0.00%)
32168	New Smyrna Beach	Volusia	23,490 (95.83%)	691 (2.82%)	106 (0.43%)	213 (0.87%)	12 (0.05%)
32169	New Smyrna Beach	Volusia	9,781 (93.80%)	224 (2.15%)	120 (1.15%)	301 (2.89%)	1 (0.01%)
32759	Oak Hill	Volusia	2,584 (98.36%)	23 (0.88%)	2 (0.08%)	18 (0.69%)	0 (0.00%)
Volusia			430,082 (87.33%)	43,956 (8.93%)	4,418 (0.90%)	11,832 (2.40%)	2,195 (0.45%)
Florida			13,910,494 (72.46%)	3,912,758 (20.38%)	291,433 (1.52%)	978,394 (5.10%)	104,837 (0.55%)

## Percent Population Growth 2010 to 2016 (All and Families)

Zip Code	City	County	All	Families
32132	Edgewater	Volusia	1.36%	1.99%
32141	Edgewater	Volusia	4.30%	3.76%
32168	New Smyrna Beach	Volusia	5.84%	5.87%
32169	New Smyrna Beach	Volusia	7.09%	7.06%
32759	Oak Hill	Volusia	-4.55%	-2.77%
Volusia			4.47%	4.67%
Florida			7.97%	7.85%

## 2016 Owner Occupied Housing Units Median Value

Zip Code	City	County	Median Value
32132	Edgewater	Volusia	\$119,919
32141	Edgewater	Volusia	\$129,995
32168	New Smyrna Beach	Volusia	\$172,923
32169	New Smyrna Beach	Volusia	\$287,611
32759	Oak Hill	Volusia	\$131,038
Volusia			\$143,696
Florida			\$172,146

## 2016 Households, People < 18

Zip Code	City	County	Households including People under Age 18
32132	Edgewater	Volusia	756 (22.49%)
32141	Edgewater	Volusia	1,863 (23.92%)
32168	New Smyrna Beach	Volusia	2,500 (21.72%)
32169	New Smyrna Beach	Volusia	654 (11.90%)
32759	Oak Hill	Volusia	250 (20.02%)
Volusia			54,578 (25.06%)
Florida			2,391,077 (29.91%)

## 2016 Median Length of Residence

Zip Code	City	County	Total	Renter Occupied Housing Units	Owner Occupied Housing Units
32132	Edgewater	Volusia	11.50	5.30	14.10
32141	Edgewater	Volusia	11.20	5.10	12.40
32168	New Smyrna Beach	Volusia	10.50	5.30	12.20
32169	New Smyrna Beach	Volusia	10.40	4.30	12.80
32759	Oak Hill	Volusia	12.60	7.10	13.70
Volusia			10.40	5.30	12.60
Florida			9.50	5.10	12.00

## 2016 Occupied Housing Units by Vehicles Available

Zip Code	City	County	No Vehicle	1 Vehicle	2 Vehicles	3 Vehicles	4 Vehicles	5+ Vehicles
32132	Edgewater	Volusia	199 (5.92%)	1,298 (38.62%)	1,404 (41.77%)	421 (12.53%)	32 (0.95%)	7 (0.21%)
32141	Edgewater	Volusia	170 (2.18%)	3,379 (43.39%)	3,222 (41.38%)	800 (10.27%)	139 (1.79%)	77 (0.99%)
32168	New Smyrna Beach	Volusia	638 (5.54%)	4,702 (40.86%)	4,514 (39.22%)	1,359 (11.81%)	236 (2.05%)	59 (0.51%)
32169	New Smyrna Beach	Volusia	215 (3.91%)	2,605 (47.41%)	2,365 (43.04%)	257 (4.68%)	37 (0.67%)	16 (0.29%)
32759	Oak Hill	Volusia	56 (4.48%)	495 (39.63%)	553 (44.28%)	101 (8.09%)	34 (2.72%)	10 (0.80%)
Volusia			12,934 (5.94%)	95,428 (43.81%)	81,719 (37.52%)	21,856 (10.03%)	4,608 (2.12%)	1,253 (0.58%)
Florida			563,683 (7.05%)	3,317,287 (41.49%)	3,031,556 (37.92%)	823,950 (10.31%)	200,008 (2.50%)	58,265 (0.73%)

## 2016 Households by Income (Under \$50,000)

Zip Code	City	County	< \$15,000	\$15,000 - \$24,999	\$25,000 - \$34,999	\$35,000 - \$49,999
32132	Edgewater	Volusia	470 (13.98%)	314 (9.34%)	563 (16.75%)	641 (19.07%)
32141	Edgewater	Volusia	798 (10.25%)	1,018 (13.07%)	1,126 (14.46%)	1,720 (22.09%)
32168	New Smyrna Beach	Volusia	1,647 (14.31%)	1,217 (10.58%)	1,526 (13.26%)	1,912 (16.61%)
32169	New Smyrna Beach	Volusia	706 (12.85%)	450 (8.19%)	587 (10.68%)	850 (15.47%)
32759	Oak Hill	Volusia	276 (22.10%)	209 (16.73%)	167 (13.37%)	193 (15.45%)
Volusia			32,008 (14.70%)	30,695 (14.09%)	29,564 (13.57%)	38,840 (17.83%)
Florida			1,080,320 (13.51%)	955,399 (11.95%)	924,023 (11.56%)	1,205,423 (15.08%)

## 2016 Households by Income (\$50,000-\$149,999)

Zip Code	City	County	\$50,000 - \$74,999	\$75,000 - \$99,000	\$100,000 - \$124,999	\$125,000 - \$149,999
32132	Edgewater	Volusia	673 (20.02%)	420 (12.50%)	126 (3.75%)	71 (2.11%)
32141	Edgewater	Volusia	1,535 (19.71%)	893 (11.47%)	348 (4.47%)	144 (1.85%)
32168	New Smyrna Beach	Volusia	2,133 (18.53%)	1,411 (12.26%)	801 (6.96%)	301 (2.62%)
32169	New Smyrna Beach	Volusia	1,243 (22.62%)	665 (12.10%)	318 (5.79%)	199 (3.62%)
32759	Oak Hill	Volusia	169 (13.53%)	122 (9.77%)	68 (5.44%)	25 (2.00%)
Volusia			37,731 (17.32%)	22,436 (10.30%)	11,435 (5.25%)	5,292 (2.43%)
Florida			1,439,577 (18.01%)	872,828 (10.92%)	561,297 (7.02%)	314,865 (3.94%)

## 2016 Households by Income (\$150,000 and Over)

Zip Code	City	County	\$150,000 - \$199,999	\$200,000 - \$249,999	\$250,000 - \$499,999	\$500,000+
32132	Edgewater	Volusia	37 (1.10%)	15 (0.45%)	24 (0.71%)	7 (0.21%)
32141	Edgewater	Volusia	82 (1.05%)	37 (0.48%)	55 (0.71%)	31 (0.40%)
32168	New Smyrna Beach	Volusia	245 (2.13%)	98 (0.85%)	152 (1.32%)	65 (0.56%)
32169	New Smyrna Beach	Volusia	251 (4.57%)	81 (1.47%)	115 (2.09%)	30 (0.55%)
32759	Oak Hill	Volusia	13 (1.04%)	3 (0.24%)	4 (0.32%)	0 (0.00%)
Volusia			5,118 (2.35%)	1,778 (0.82%)	2,249 (1.03%)	652 (0.30%)
Florida			299,138 (3.74%)	122,176 (1.53%)	154,964 (1.94%)	64,739 (0.81%)

## Median Household Income

Zip Code	City	County	Median Household Income
32132	Edgewater	Volusia	\$42,804
32141	Edgewater	Volusia	\$43,298
32168	New Smyrna Beach	Volusia	\$45,701
32169	New Smyrna Beach	Volusia	\$53,107
32759	Oak Hill	Volusia	\$33,353
Volusia			\$41,423
Florida			\$47,912

## Families Below Poverty

Zip Code	City	County	Families Below Poverty	Families Below Poverty with Children
32132	Edgewater	Volusia	101 (4.93%)	48 (2.34%)
32141	Edgewater	Volusia	413 (7.71%)	214 (3.99%)
32168	New Smyrna Beach	Volusia	731 (10.24%)	489 (6.85%)
32169	New Smyrna Beach	Volusia	273 (8.69%)	149 (4.74%)
32759	Oak Hill	Volusia	155 (20.10%)	65 (8.43%)
Volusia			16,130 (11.82%)	10,988 (8.05%)
Florida			647,028 (12.41%)	453,650 (8.70%)

## Population 25+ by Educational Attainment

Zip Code	City	County	Less than 9th Grade	Some High School, No Diploma	High School Grad	Some College, No Degree
32132	Edgewater	Volusia	94 (1.66%)	419 (7.41%)	2,211 (39.11%)	1,606 (28.41%)
32141	Edgewater	Volusia	325 (2.31%)	962 (6.85%)	5,595 (39.82%)	3,855 (27.44%)
32168	New Smyrna Beach	Volusia	629 (3.17%)	1,248 (6.30%)	7,027 (35.46%)	4,665 (23.54%)
32169	New Smyrna Beach	Volusia	141 (1.52%)	428 (4.62%)	2,242 (24.18%)	2,129 (22.96%)
32759	Oak Hill	Volusia	97 (4.51%)	277 (12.89%)	957 (44.53%)	504 (23.45%)
Volusia			12,586 (3.31%)	30,492 (8.02%)	129,521 (34.05%)	92,580 (24.34%)
Florida			771,559 (5.37%)	1,151,837 (8.02%)	4,260,919 (29.65%)	2,978,401 (20.73%)

Zip Code	City	County	Associate Degree	Bachelor Degree	Master's Degree	Prof. School Degree	Doctorate Degree
32132	Edgewater	Volusia	406 (7.18%)	588 (10.40%)	224 (3.96%)	64 (1.13%)	41 (0.73%)
32141	Edgewater	Volusia	1,333 (9.49%)	1,259 (8.96%)	581 (4.14%)	84 (0.60%)	56 (0.40%)
32168	New Smyrna Beach	Volusia	1,811 (9.14%)	3,086 (15.57%)	884 (4.46%)	237 (1.20%)	232 (1.17%)
32169	New Smyrna Beach	Volusia	1,084 (11.69%)	1,762 (19.01%)	975 (10.52%)	303 (3.27%)	207 (2.23%)
32759	Oak Hill	Volusia	153 (7.12%)	80 (3.72%)	77 (3.58%)	1 (0.05%)	3 (0.14%)
Volusia			35,234 (9.26%)	51,151 (13.45%)	19,799 (5.20%)	5,876 (1.54%)	3,146 (0.83%)
Florida			1,339,159 (9.32%)	2,489,744 (17.33%)	936,816 (6.52%)	285,226 (1.98%)	155,473 (1.08%)



## 2016 Percent Civilian Labor Force Unemployed

Zip Code	City	County	All	Male	Female
32132	Edgewater	Volusia	12.66%	17.20%	7.41%
32141	Edgewater	Volusia	11.13%	13.52%	8.82%
32168	New Smyrna Beach	Volusia	8.59%	9.38%	7.75%
32169	New Smyrna Beach	Volusia	4.60%	2.53%	7.06%
32759	Oak Hill	Volusia	15.03%	15.84%	14.12%
Volusia			10.17%	11.34%	8.89%
Florida			10.46%	10.79%	10.10%

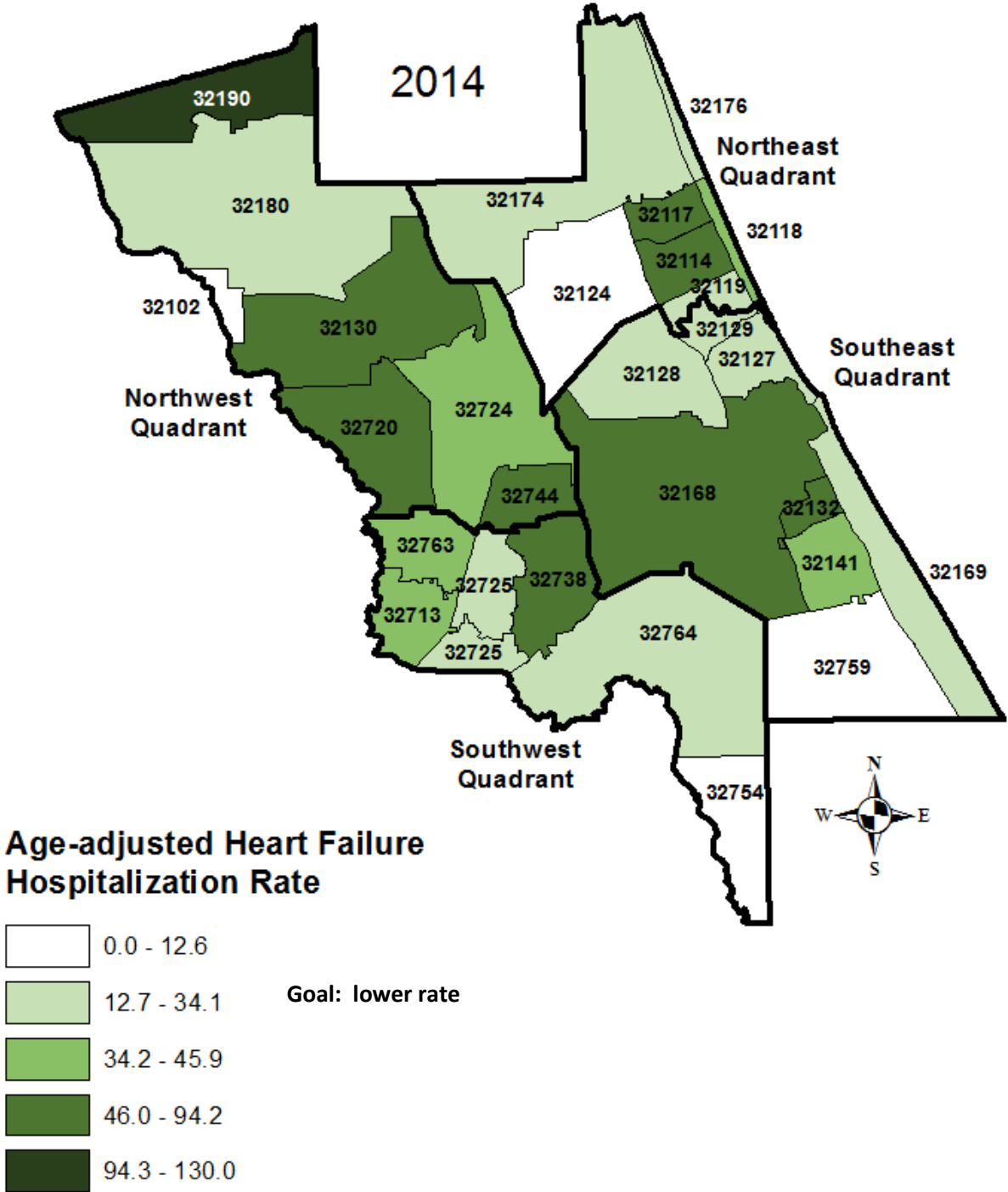
## Means of Transportation to Work

Zip Code	City	County	Worked at Home	Carpooled	Drove Alone
32132	Edgewater	Volusia	135 (4.36%)	313 (10.11%)	2,429 (78.46%)
32141	Edgewater	Volusia	303 (4.27%)	715 (10.07%)	5,897 (83.09%)
32168	New Smyrna Beach	Volusia	654 (6.35%)	1,006 (9.77%)	8,137 (79.01%)
32169	New Smyrna Beach	Volusia	493 (12.61%)	190 (4.86%)	3,062 (78.33%)
32759	Oak Hill	Volusia	83 (10.63%)	104 (13.32%)	576 (73.75%)
Volusia			11,178 (5.50%)	17,433 (8.58%)	164,378 (80.92%)
Florida			433,945 (4.99%)	831,663 (9.56%)	6,924,328 (79.57%)

Zip Code	City	County	Walked	Bicycle	Public Transport	Other
32132	Edgewater	Volusia	37 (1.20%)	30 (0.97%)	0 (0.00%)	152 (4.91%)
32141	Edgewater	Volusia	34 (0.48%)	23 (0.32%)	4 (0.06%)	121 (1.70%)
32168	New Smyrna Beach	Volusia	45 (0.44%)	59 (0.57%)	24 (0.23%)	374 (3.63%)
32169	New Smyrna Beach	Volusia	42 (1.07%)	13 (0.33%)	2 (0.05%)	107 (2.74%)
32759	Oak Hill	Volusia	6 (0.77%)	0 (0.00%)	4 (0.51%)	8 (1.02%)
Volusia			2,745 (1.35%)	1,073 (0.53%)	1,282 (0.63%)	5,048 (2.49%)
Florida			133,079 (1.53%)	59,323 (0.68%)	184,212 (2.12%)	135,277 (1.55%)

# Health Issue Maps for Volusia County

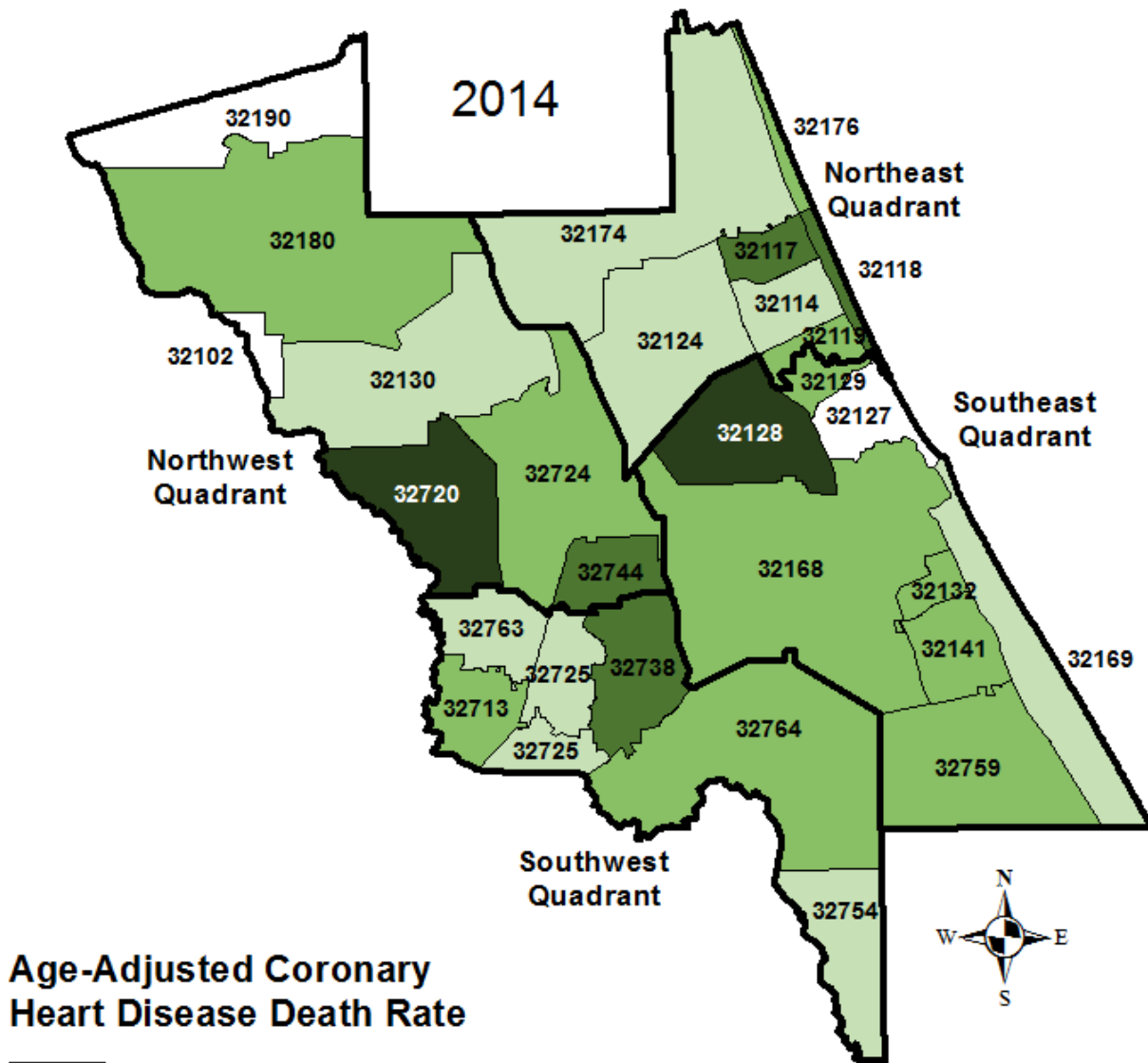
## Map 1 Congestive Heart Failure Age-adjusted Hospitalization Rate 2014



Source: Agency for Health Care Administration  
 Note: Rate per 100,000

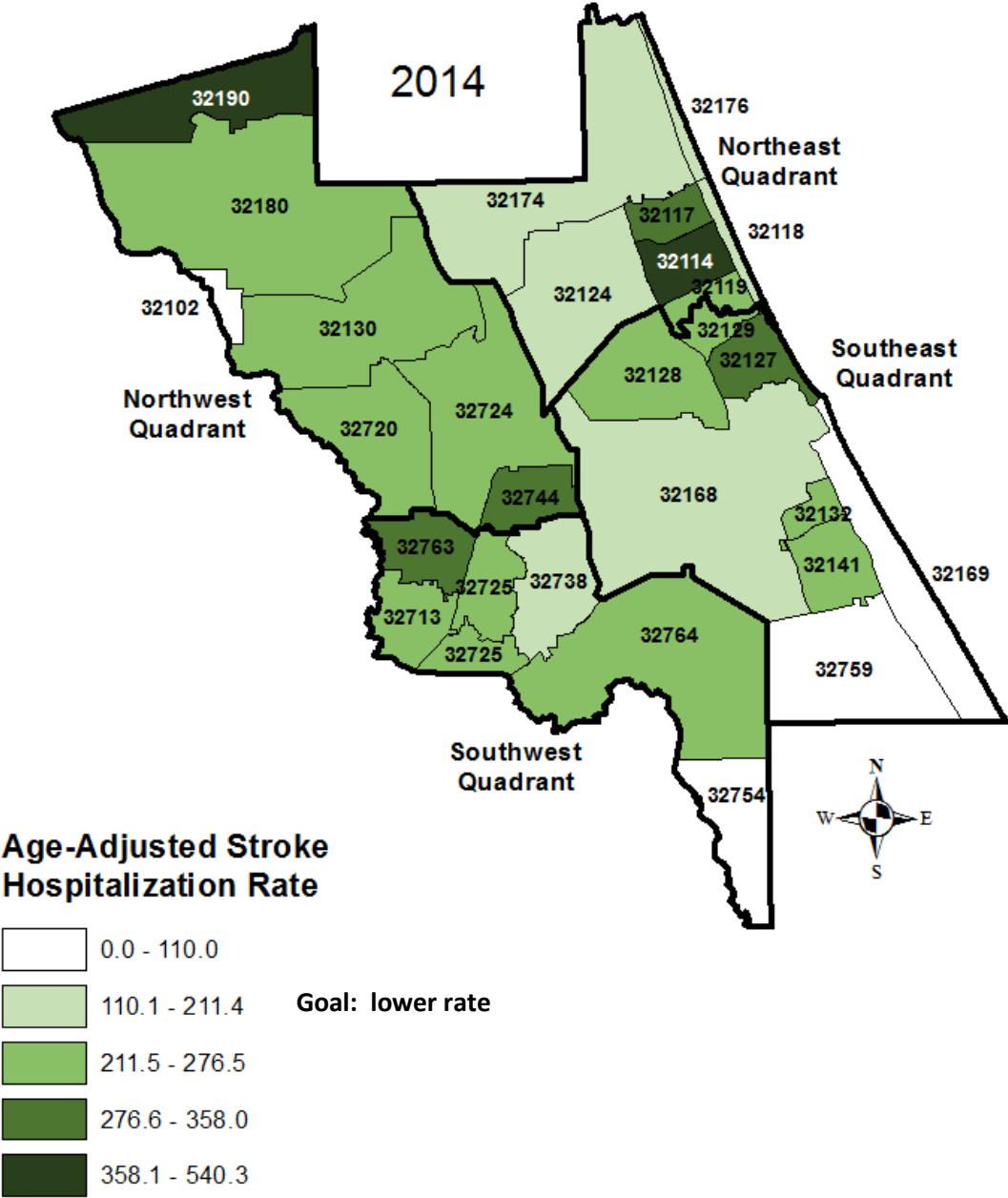


**Map 3 Coronary Heart Disease Age-adjusted Death Rate**



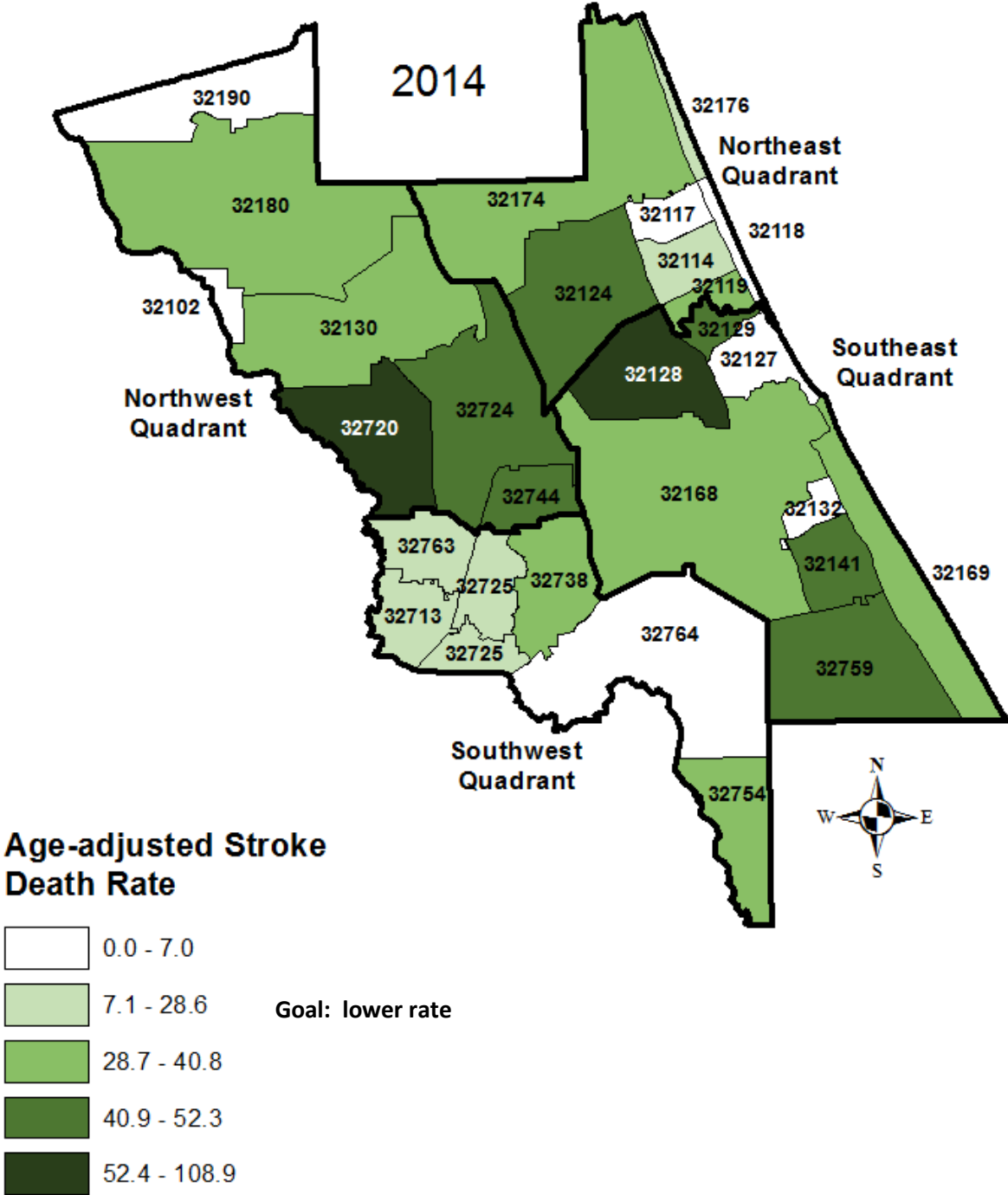
Source: Florida Department of Health, Bureau of Vital Statistics  
 Note: Rate per 100,000

**Map 4 Stroke Age-adjusted Hospitalization Rate 2014**



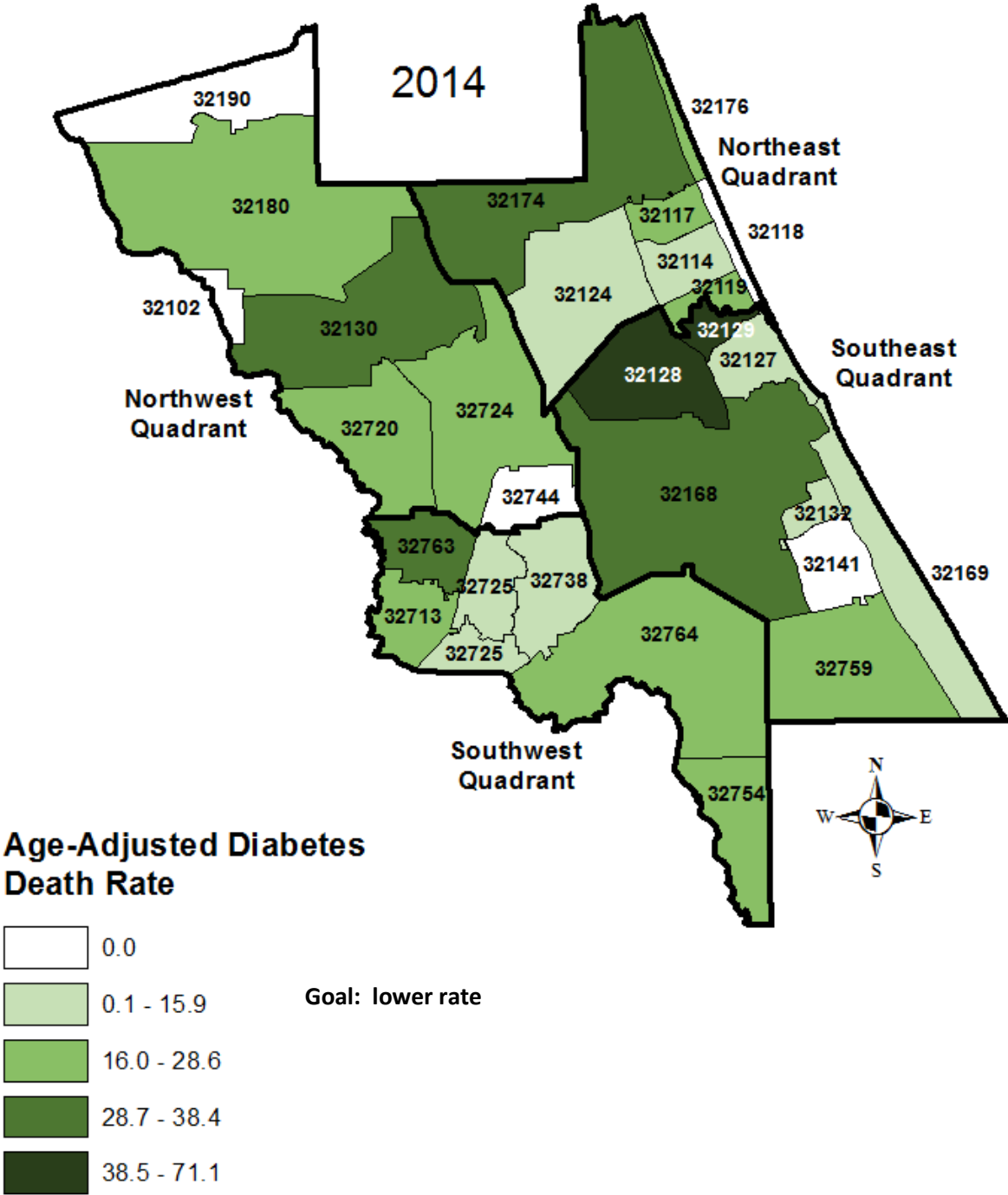
Source: Agency for Health Care Administration  
 Note: Rate per 100,000

**Map 5 Stroke Age-adjusted Death Rate**



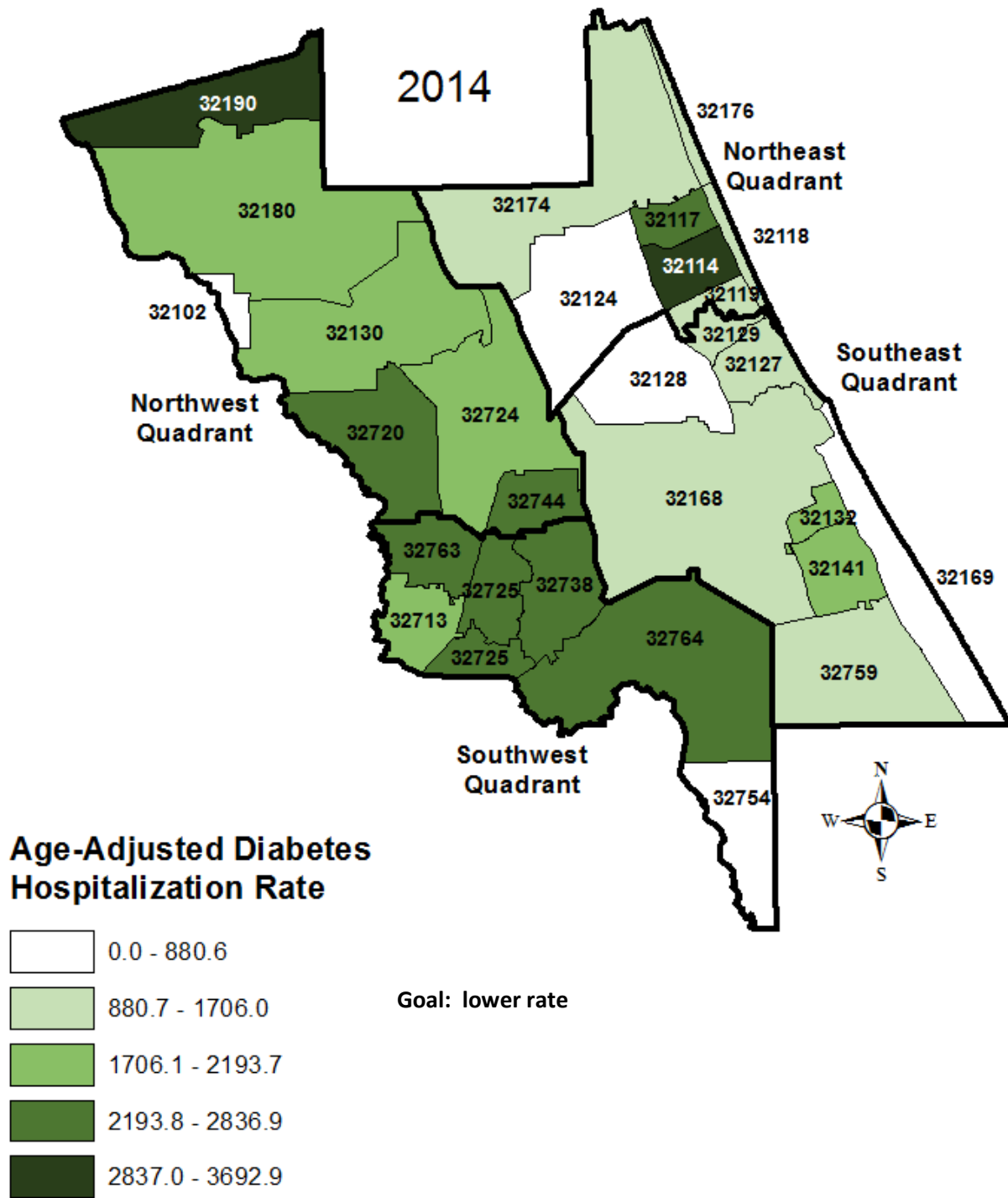
Source: Florida Department of Health, Bureau of Vital Statistics  
 Note: Rate per 100,000

**Map 6 Diabetes Age-adjusted Death Rates**



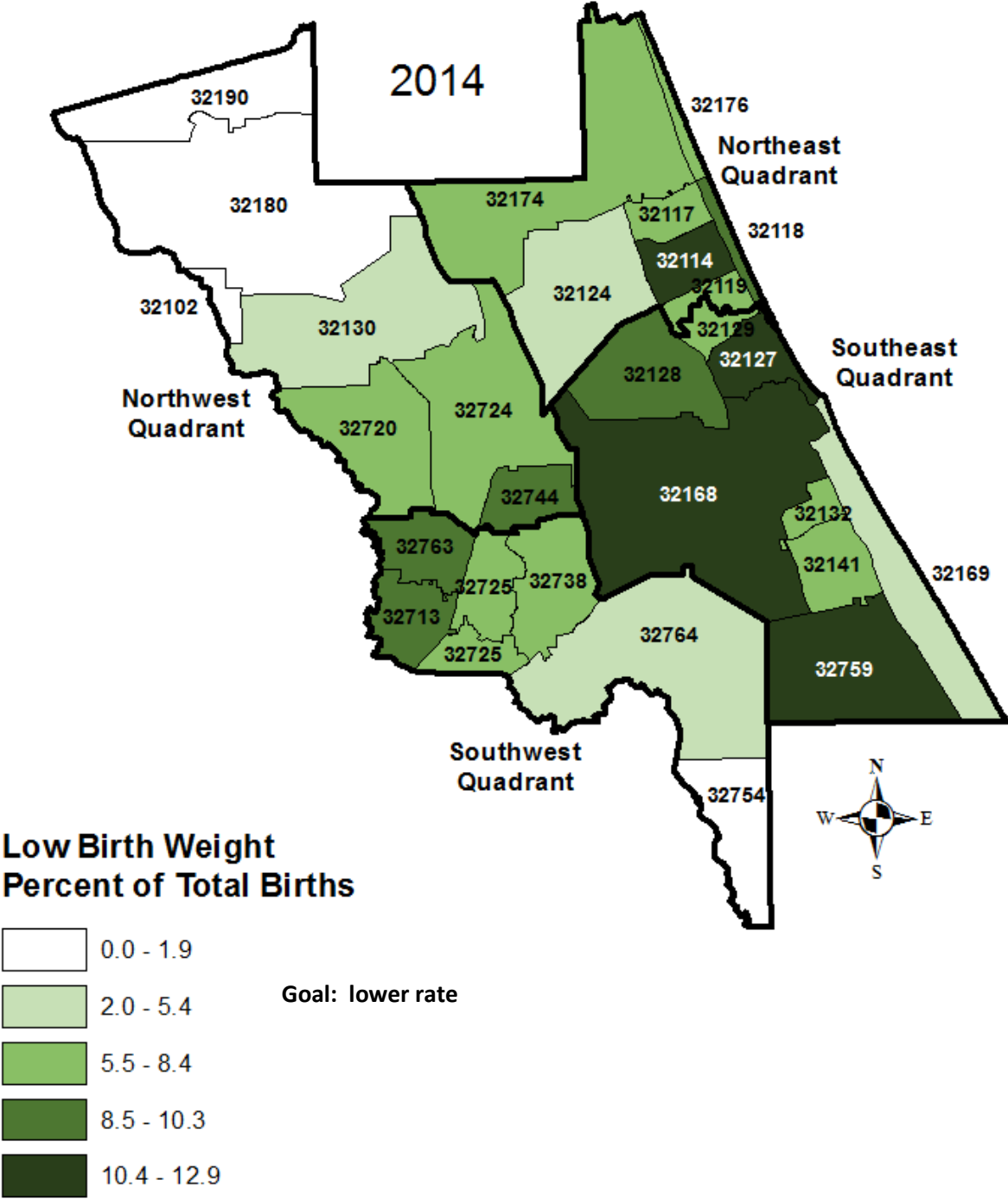
Source: Florida Department of Health, Bureau of Vital Statistics  
 Note: Rate per 100,000

**Map 7 Diabetes Age-adjusted Hospitalizations Rate 2014**



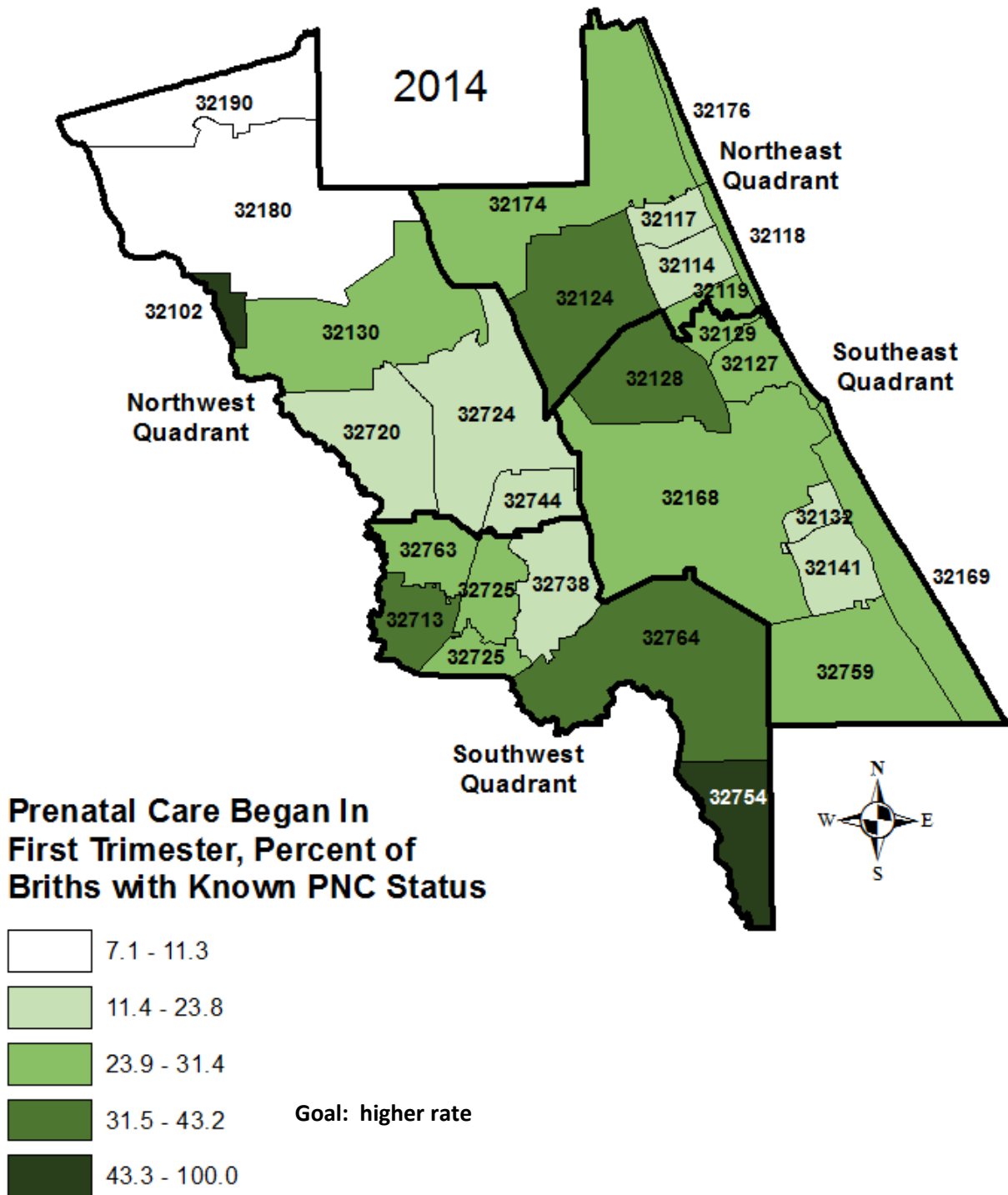


**Map 8 Low Birth Weight (Live Births Under 2500 Grams) 2014**



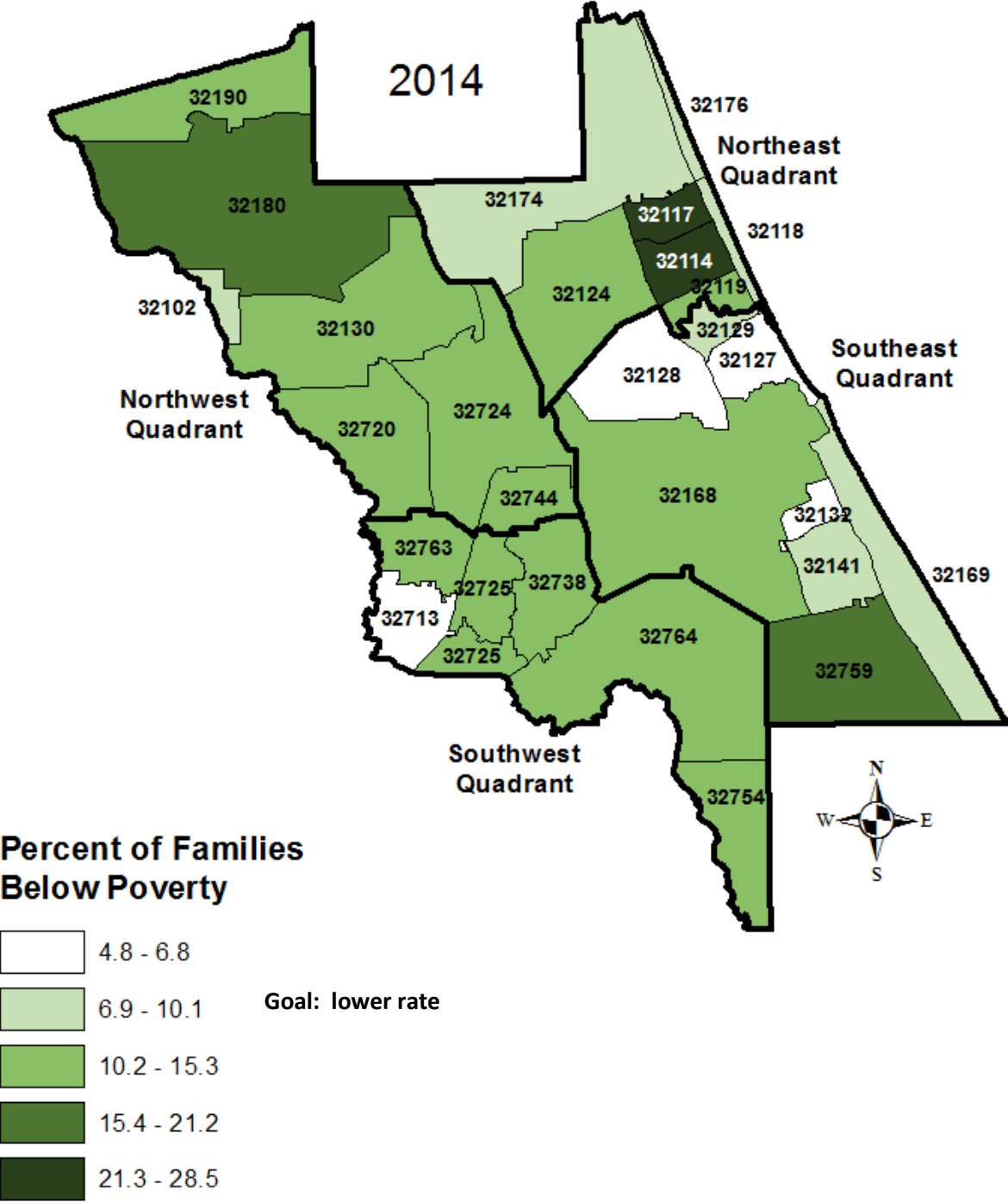
Source: Florida Department of Health, Bureau of Vital Statistics  
 Note: Percent of Total Births

# Map 9 Prenatal Care Began in First Trimester



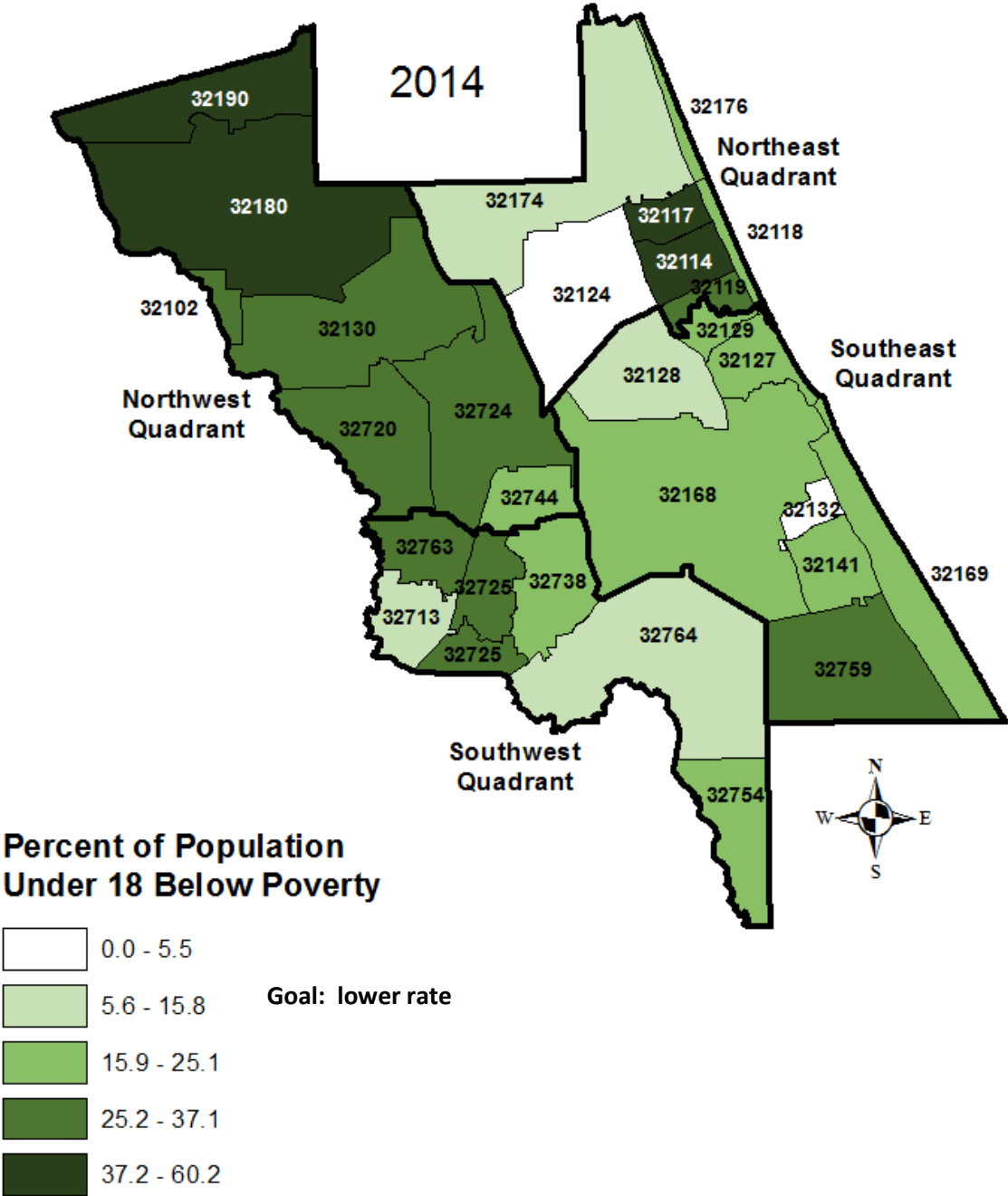
Source: Florida Department of Health, Bureau of Vital Statistics  
 Note: Percent of Births with Known PNC Status

**Map 10 Percent of Families Below Poverty Level 2014**



Source: US Census Bureau, American Community Survey 2014 5-Year Estimates

**Map 11 Percent of Population Under Age 18 Below Poverty Level 2014**



Source: US Census Bureau, American Community Survey 2014 5-Year Estimates

## 5. Community Health Needs Assessment Leadership Team

The Leadership Team of the Volusia County Community Health Needs Assessment Partnership was formed to conduct a comprehensive assessment of the community. The Committee included representation from the community, public health, and low-income, minority and other underserved populations. The Committee met three times during 2015-2016.

### Volusia County Leadership Team

#	Name/Title	Entity/Agency Represented	Expertise
1	Patricia Boswell, Administrator	Florida Department of Health – Volusia County	Public Health
2	Loreen Husband, Community Health	Florida Department of Health – Volusia County	Public Health
3	Thomas Bryant III, Office of Informatics and Assessment	Florida Department of Health – Volusia County	Public Health
4	Ron Rondeau, Interim Director	Florida Department of Health – Volusia County	Public Health
5	Dona DeMarsh Butler, Director of Community Assistance Volusia County	Florida Department of Health – Volusia County	County Government, low-income county residents
6	Tim Cook, Former CEO – DeLand	Florida Hospital Volusia/Flagler	Hospital
7	Robert Fulbright, Regional CEO	Florida Hospital Volusia/Flagler	Hospital
8	Craig Bair, Community Benefit Manager	Florida Hospital New Smyrna	Hospital
9	Beverly Ivey, Assistant VP Integrated Marketing	Florida Hospital Volusia/Flagler	Hospital, Community Health Needs Assessment
10	Lorenzo Brown, CEO – DeLand	Florida Hospital Volusia/Flagler	Hospital
11	Deborah McNabb, Community Benefit Manager - Fish Memorial	Florida Hospital Volusia/Flagler	Hospital, Community Health Needs Assessment
12	Jeff Davidson, Finance Leader - New Smyrna	Florida Hospital Volusia/Flagler	Hospital
13	Ed Noseworthy, CEO - Memorial Medical Center	Florida Hospital Volusia/Flagler	Hospital
14	Robert Denninger, CEO - Fish Memorial	Florida Hospital Volusia/Flagler	Hospital
15	Jill Piazza, VP of Care Integration	Florida Hospital Volusia/Flagler	Care integration for low-income and uninsured
16	Nancy Evolga, Executive Director Human Resources - New Smyrna	Florida Hospital Volusia/Flagler	Hospital
17	Daryl Tol, former CEO - Memorial Medical Center	Florida Hospital Volusia/Flagler	Hospital
18	Shannon Finley, Community Benefit Manager - Memorial Medical Center/Oceanside	Florida Hospital Volusia/Flagler	Hospital, Community Health Needs Assessment
19	Windy Weisheimer, Quality Leader - New Smyrna	Florida Hospital Volusia/Flagler	Hospital
20	Christina Fitzsimons, Community Benefit Manager - DeLand	Florida Hospital Volusia/Flagler	Hospital
21	Bill Griffin, Director, Research and Planning	Halifax Health	Hospital, Community Health Needs Assessment
22	Bob Williams, VP of Population Health and Business Development	Halifax Health	Hospital, Hospital, Community Health Needs Assessment

#	Name/Title	Entity/Agency Represented	Expertise
23	Sharon Warriner, Grant Writer, Business Development	Halifax Health	Hospital, Community Health Needs Assessment
24	Julie Barrow, Executive Director	One Voice for Volusia	Assessment and Planning
25	Lynn Kennedy, Project Director	One Voice for Volusia	Assessment and Planning
26	Carrie Baird, Consultant - Baird Solutions	One Voice for Volusia	Assessment and Planning
27	Laurie Asbury, CEO	Family Health Source Medical Centers	FQHC – low-income, minority and underserved patients
28	Dennis Burns, President & CEO	United Way of Volusia/Flagler	Local funder, services for low-income and underserved
29	Christine Cauffield, Vice President of Substance Abuse and Mental Health	Lutheran Services Florida Health Systems	Behavioral Health
30	Laurie Chesley, CFO of Substance Abuse and Mental Health	Lutheran Services Florida Health Systems	Behavioral Health
31	Ivan Cosimi, CEO	Stewart-Marchman-Act Behavioral Healthcare	Behavioral Health
32	Rhonda Harvey, COO	Stewart-Marchman-Act Behavioral Healthcare	Behavioral Health
33	Debbie Fisher, Coordinator of Health Services	Volusia County Schools	School Health
34	William Gilmer, Jesus Clinic Founder/Physician	Jesus Clinic (free clinic)	Free Clinic for uninsured
35	Laura Gunn, Associate Professor and Chair of Integrative Health Science	Stetson University	Higher Education
36	Sarah Gurtis, CEO	Council on Aging	Senior Services
37	Bev Johnson, Executive Vice President of Health Strategy	Volusia-Flagler Family YMCA	Health/Wellness
38	Robin King, President/CEO	CareerSource Flagler/Volusia	Employment and job training
39	D.J. Lebo, Executive Director	Early Learning Coalition of Flagler/Volusia	Early Learning
40	Rosha Loach, One Voice for Volusia MPH Intern	Healthy Start Coalition of Flagler/Volusia	Maternal and Child Health
41	Dixie Morgese, Executive Director of Healthy Start	Healthy Start Coalition of Flagler and Volusia	Maternal and Child Health
42	Kevin Murphy, Operations Consultant	Florida Department of Health – Volusia	Public Health
43	Ray Salazar, President	United Way of Volusia/Flagler	Local funder, services for low-income and underserved
44	Lynn Sinnott, President	Easter Seals Society	Disabilities
45	Deanna Wathington, Executive Dean/Professor, College of Health Sciences	Bethune-Cookman University	Higher Education

## 6. Public Health

The Florida Department of Health-Volusia was one of the seven key partners in the 2015-16 Volusia County Community Health Needs Assessment Partnership. They were represented by:

- Patricia Boswell, Administrator
- Loreen Husband, Community Health
- Thomas Bryant III, Office of Informatics and Assessment
- Ron Rondeau, Interim Director
- Dona DeMarsh Butler, Director of Community Assistance Volusia County

**Patricia Boswell** has served as the assistant county health department director in Pinellas County. Prior to that she was director of clinical services and community health promotion in Pinellas County for 10 years.

A fifteen-year veteran of the Department, Patricia began her career with Florida Health in 2001 as the program manager for the Breast and Cervical Cancer Screening Program in Pinellas County. In 2004, she became director of the Office of Chronic Disease Prevention for the Florida Department of Health in Pinellas County. Prior to her arrival at the Department, Patricia was the Executive Director for Sullivan County Victim Services in Pennsylvania from 1995 to 2000, Assistant Director of Capital Planning for Hershey Medical Center in Pennsylvania from 1993 to 1995, and a Legislative Analyst for the Suffolk County Office of Legislative Budget in New York from 1986 to 1993. Patricia started her career in public health more than 31 years ago at the Suffolk County Health Department.

Patricia holds a Master of Science in Urban and Policy Sciences from the State University of New York at Stony Brook and a Master of Public Health from the University of South Florida. She is also a graduate of the National Public Health Leadership Institute and the Public Health Leadership Institute of Florida.

**Thomas Bryant III** is the director of the Office of Informatics and Assessment (OIA). He came to Volusia County in 2013 with the charge to inform the Volusia County community of their health status, provide health data to facilitate healthy lifestyle choices and utilize data to assist health department programs to improve upon their processes and services.

Mr. Bryant started his public health career in 2001 at the Duval County Health Department where he co-founded the Institute for Public Health Informatics and Research. In 2008, the Institute received the National Maternal and Child Health Effective Practice Award for their community health status reports.

Mr. Bryant has directed research and evaluation programs at the Volusia and Duval County Health Departments, Northeast Florida Regional Planning Council, NYC Department of Probation and NYC Commission on Human Rights. He has taught graduate and undergraduate courses at Columbia University, New York University and Tusculum College. Mr. Bryant has extensive training and experience in qualitative and quantitative analyses. He is trained in Perinatal Periods of Risk analyses and MCH Epidemiology. He is proficient in statistical, database and GIS mapping software.

Mr. Bryant has co-authored manuscripts published in the Journal of Public Health Management & Practice, Maternal and Child Health, Medical Care, Pediatrics, Clinical Pediatrics and Public Health Reports. He has presented at national and state conferences including the American Public Health Association, Centers for Disease Control and Prevention, Society for Applied Anthropology, Florida Statewide Epidemiology Seminar, Florida Public Health Association and the Florida Medicaid Policy and Research Conference. Mr. Bryant received his Master's in Social Work from Florida State University. He continued his education in social research in the doctoral program at the Columbia University School of Social Work.

## 7. Primary & Secondary Data Sources

### **Primary Data**

- a. Volusia County CHNA Leadership Team engagement
- b. Community Health Survey. The 2015-2016 Community Health Survey in Volusia and Flagler Counties relied primarily on an Internet-based survey--which was collected using Survey Monkey--to reach as many respondents as. The online survey was available in English and Spanish via [www.communityhealthsurvey.com](http://www.communityhealthsurvey.com). There were 2,150 Internet surveys collected. Paper surveys, also available in Spanish and English, were utilized to reach individuals without convenient access to the Internet and were manually entered. 530 paper surveys were manually entered. *See Appendix A. for the Community Health Survey Results for Volusia County and Florida Hospital New Smyrna's PSA.*
- c. Hospital Utilization Data (Top 10 Inpatient and Emergency Department diagnoses by payer)

### **Secondary Data**

A comprehensive CHNA document was prepared for the Volusia County CHNA Leadership Team that included secondary data from the following sources.

#### **A.L.I.C.E. Report United Way of Volusia-Flagler Counties**

<http://www.unitedway-vfc.org>

#### **Centers for Disease Control (CDC)**

<http://www.cdc.gov/>

#### **Florida Agency for Health Care Administration**

[www.ahca.myflorida.com](http://www.ahca.myflorida.com)

#### **Florida Department of Children and Families**

[www.myflfamilies.com](http://www.myflfamilies.com), [www.centerforchildwelfare.org/Datareports/TrendReports.shtml](http://www.centerforchildwelfare.org/Datareports/TrendReports.shtml)

Florida Safe Families Network Data Mart/Data Registry

Florida Youth Substance Abuse Survey

<http://myflfamilies.com/service-programs/substance-abuse/fysas>

#### **Florida Department of Education**

[www.fldoe.org](http://www.fldoe.org)

Education Information and Accountability Services

Office of Early Learning

Office of Safe Schools

#### **Florida Department of Health**

[www.doh.state.fl.us](http://www.doh.state.fl.us), [www.floridacharts.com](http://www.floridacharts.com)

Bureau of Epidemiology

Bureau of HIV/AIDS

Bureau of Immunization

Bureau of STD Prevention and Control

Bureau of TB & Refugee Health

Bureau of Vital Statistics

Florida Behavioral Risk Factor Surveillance System

Florida Department of Health Physician Workforce Surveys



Florida Youth Tobacco Survey  
Office of Injury Prevention  
WIC and Nutritional Services

**Florida Department of Highway Safety and Motor Vehicles**

[www.flhsmv.gov](http://www.flhsmv.gov)

**Florida Department of Juvenile Justice**

[www.djj.state.fl.us](http://www.djj.state.fl.us)

**Florida Department of Law Enforcement**

[www.fdle.state.fl.us](http://www.fdle.state.fl.us)

**Florida Department of Transportation, Florida Commission for the Transportation Disadvantaged**

[www.dot.state.fl.us/ctd](http://www.dot.state.fl.us/ctd)

**Florida Office of Insurance Regulation**

[www.floir.com](http://www.floir.com)

**Florida Research and Economic Information Database Application**

<http://freida.labormarketinfo.com>

**Florida Youth Substance Abuse Survey**

<http://www.myflfamilies.com/service-programs/substance-abuse/fysas/2014>

**Healthy Kids**

<http://www.healthykids.org>

**Healthy People 2020**

<http://www.healthypeople.gov>

**Poverty in America**

[www.livingwage.mit.edu](http://www.livingwage.mit.edu)

**Merlin, Florida's Web-Based Reportable Disease Surveillance System**

**National Association of County & City Health Officials (NACCHO)**

<http://www.naccho.org/>

**Northeast Florida Counts**

[www.nefloridacounts.org](http://www.nefloridacounts.org)

Demographic Data, Claritas

**Schedule H (Form 990), Hospitals IRS**

<http://www.irs.gov/uac/About-Schedule-H-Form-990>. 19

**Social Determinants of Health**

[www.cdc.gov/socialdeterminants/Definitions.html](http://www.cdc.gov/socialdeterminants/Definitions.html)

**U.S. Census Bureau**

<http://www.census.gov> and <https://www.census.gov/census2000/raceqandas.html>

American Community Survey

American Community Survey 1-year estimates

American Community Survey 5-year estimates

**U.S. Department of Labor, Bureau of Labor Statistics**

<http://www.bls.gov>

**U.S. Department of Health and Human Services**

<http://www.hhs.gov>

**U. S. Department of Health and Human Services Health Resources and Services Administration**

(HRSA) <http://www.hrsa.gov/shortage/index.html>

**University of South Florida, Florida Mental Health Institute**

<http://bakeract.fmhi.usf.edu/>

**U. S. Preventive Services Task Force (USPSTF)**

<http://www.uspreventiveservicestaskforce.org/index.html>.

**World Health Organization (WHO)**

[http://www.who.int/healthsystems/hss\\_glossary/en/index5.html](http://www.who.int/healthsystems/hss_glossary/en/index5.html)

[http://wwwtopics/chronic\\_diseases/en/](http://wwwtopics/chronic_diseases/en/)

[http://www.who.int/topics/public\\_health\\_surveillance](http://www.who.int/topics/public_health_surveillance)

## **8. Community Collaboration**

In 2015-16, to reflect best practices and maximize community impact, leaders from Florida Hospital Deland, Florida Hospital New Smyrna, Florida Hospital Memorial Medical Center, Florida Hospital New Smyrna (formerly Bert Fish Medical Center), Florida Department of Health-Volusia, Halifax Health and One Voice for Volusia convened to explore a collaborative process to develop a shared Community Health Needs Assessment & Community Health Improvement Plan (CHIP) for Volusia. Florida Hospital New Smyrna was part of that process, and may target specific needs based on the hospital's service area and capacity.

These pillar organizations unanimously agreed to work together for the greater good and they formed the **Volusia County Community Health Needs Assessment (CHNA) Partnership** through committing their time, talent and resources to support the CHNA process outlined below which was facilitated by One Voice for Volusia.

The **Volusia County CHNA Partnership** entities held a common vision to improve the population health and wellbeing in Volusia County. They committed to a 9-month long process of convening to review and examine county-level and sub-county-level secondary data along with supporting the collection and review of primary data in order to establish high-level and priority health issues. They agreed to invest in the creation of this shared community health needs assessment document that contains the examined and prioritized health issues along with the data indicators and identified community assets. This shared document will then serve as a common resource for both the investing partner organizations and the many community stakeholders that will support the creation of community health improvement plans based on these findings.

## Volusia County CHNA/CHIP Partnership

Florida Hospital Memorial Medical Center	Project Funder
Florida Hospital Deland	Project Funder
Florida Hospital Fish Memorial	Project Funder
Bert Fish Medical Center (now Florida Hospital New Smyrna)	Project Funder
Florida Department of Health-Volusia	In-kind Resources Committed
One Voice for Volusia	In-kind Resources Committed
Halifax Health	Project Funder

## 9. Asset Inventory

An inventory of community assets (and gaps) was developed through a two-step process:

1. A web-based survey was conducted to inventory existing assets and gaps. The survey was promoted among Volusia stakeholders through the Volusia County CHNA Leadership Team, the One Voice for Volusia network and through the Community Connector (an e-communication system in Volusia/Flagler with over 2,700 subscribers).
2. A Community Meeting was hosted by the One Voice for Volusia Coalition on April 13, 2016. The meeting was again promoted to the One Voice for Volusia network. The meeting was attended by 120 individuals representing many different community organizations. The meeting agenda included an opportunity for participants to provide input on current assets and suggested strategies to address the initial priorities through facilitated large and small group discussions.

*Appendix C includes the full Asset Inventory.*

## 10. Data Summary & Priority Selection

The Volusia CHNA Leadership Team met on March 15, 2016, to discuss twelve health issues detailed in a 140-page document sent to each member prior to the meeting. The document included a summary of the Forces of Change exercise, Local Public Health System Assessment, 2015-2016 Community Health Survey and the latest indicator data related to each health issue. Members were asked to consider each health issue through the lens of three prioritization criteria:

- Impact: How much does the issue affect other issues? What is the cost of NOT addressing it?
- Trend & Magnitude of Difference: Has the trend improved or worsened in the last five years? How much worse is the problem in Volusia compared to Florida?
- Feasibility: Are there successful strategies to address this problem? Is there a positive cost-benefit to addressing the problem?

Utilizing a multi-voting technique, the original 12 health issues were reduced to 5 initial priority health issues listed below. In addition to the five selected issues, the Leadership Team discussed the impact of poverty on all health and wellness issues and the importance of developing strategies that either address poverty directly or appropriately addresses the health disparities created by poverty.

The validation process included a Community Input Survey and a Community Meeting hosted by One Voice for Volusia. 120 individuals participated in the community meeting. There was 80% or higher agreement with the Initial Priority Health Issues among the survey respondents and 100% agreement at the Community Meeting.

## **11. Key Issues to be Addressed**

The Volusia CHNA Partners reconvened on June 24, 2016 for a final review of the five initial health priorities. The group consensus was to keep all five health priorities as focus areas for the Community Health Improvement Plan.

1. Adult Behavioral Health
2. Youth Mental Health and Behavioral Health
3. Chronic Disease: Cardiovascular and Diabetes
4. Barriers to Accessing Health Care Services
5. Health Eating and Physical Activity

## **12. Issues that will Not Be Addressed**

Florida Hospital New Smyrna will include strategies that address a component of each of the five priority issues in their Community Health Plan and will work in partnership with many other organizations that are leading strategies included in the countywide Community Health Plan.

*The 2016 Volusia County Community Health Needs Assessment (also posted on the web site) lists the health that will not be addressed, and explains why not.*

## **13. Next Steps**

Florida Hospital New Smyrna will continue work on the development of their internal Community Health Plan and on the countywide Community Health Improvement Plan in collaboration with the original Partners and other community organizations.

## **14. Written Comments**

Florida Hospital New Smyrna was a government hospital in 2013 and was therefore not required to create a Community Health Needs Assessment or Community Health Plan (Implementation Strategies). The hospital became part of Adventist Health System in April 2016.

## **15. Review of the Strategies Undertaken in the 2013 Community Health Plan**

Florida Hospital New Smyrna was a government hospital in 2013 and was therefore not required to create a Community Health Needs Assessment or Community Health Plan (Implementation Strategies). The hospital became part of Adventist Health System in April 2016.

# Appendix A: Community Health Survey 2015-2016

## Methodology

The 2015-2016 Community Health Survey in Volusia and Flagler Counties relied primarily on an Internet based survey (utilizing Survey Monkey) to reach as many respondents as possible within the limits of the project budget. The online survey was available in English and Spanish via [www.communityhealthsurvey.com](http://www.communityhealthsurvey.com). There were 2,150 Internet surveys collected. Paper surveys, also available in Spanish and English, were utilized to reach individuals without convenient access to the Internet and were manually entered. 530 paper surveys were manually entered.

The online and paper surveys were promoted and distributed through email communication, postings on various websites, and paper surveys made available at partner's places of business. Partners included:

- The nonprofit, governmental and business partners involved in the Community Health Needs Assessment process
- The members and partner organizations of One Voice for Volusia
- The Community Connector, an e-blast system with over 2,900 subscribers.

The 21-questions survey, based on an instrument used nationally, included questions regarding perceived quality of life and health of the community, health concerns, barriers to health care, use of health care, health care needs and demographic information.

A total of 2,680 individuals completed the Volusia/Flagler Community Health Survey (online or via paper surveys). Five individuals completed the survey online in Spanish (no Spanish paper surveys were completed). The survey respondents were asked "*Where is your permanent residence?*"

- 2,003 reported that they lived in Volusia county
- 584 reported that they lived in Flagler county
- 81 reported that they lived in another Florida county
- 12 reported that they lived outside of Florida
- **1,447 individuals reported that they lived in the MMC/Oceanside PSA (by zip codes)**

## Limitations

### Convenience Sampling

A convenience sampling methodology was used for the 2015-2016 Community Health Survey. The convenience sampling process is a non-probability sampling technique that relies on the collection of data from populations within easy reach of the researcher. In this case, community agencies were asked to promote the survey with their customers, staff and other stakeholders. This method was selected for ease and budget restrictions. Convenience sampling is much different from a random sampling methodology where the survey population is randomly sampled to gain responses from every population subset.

### Limitations and Cautions with Convenience Sampling

Convenience sampling can lead to the under-representation or over-representation of particular groups within the sample. This was the case with the 2015-2016 Community Health Survey for several subsets of the Volusia County population including males and individuals age 18-24. It is important to understand that convenience samples do not produce representative results because of the inherent biases. The results presented here cannot be considered representative of the entire population.

### Limitations of Internet Surveys

Although paper surveys were made available, the survey process relied primarily on the Internet survey. Households without access to the Internet and Internet survey results tend to underrepresent lower-income, less educated and minority households.

### Community Health Survey Respondent Demographics

Gender	Volusia (n=2,003)		PSA (n=333)	
	number	percent	number	percent
Male	363	18.12	60	18.02
Female	1,544	77.08	264	79.28
No Response	96	4.79	9	2.70
<b>Total</b>	<b>2,003</b>	<b>100.00</b>	<b>333</b>	<b>100.00</b>

Race Identification	Volusia (n=2,003)		PSA (n=333)	
	number	percent	number	percent
Black/African American	192	9.59	6	1.80
White/Caucasian	1,612	80.48	312	93.69
Asian/Pacific Islander	19	0.95	0	0.00
Other	98	4.98	8	2.40
No response	82	4.09	7	2.10
<b>Total</b>	<b>2,003</b>	<b>100.00</b>	<b>333</b>	<b>100.00</b>
<i>Question: Race: Which group do you most identify with? (Check ONE selection)</i>				

Ethnic Identification	Volusia (n=2,003)		PSA (n=333)	
	number	percent	number	percent
Not Hispanic/Latino	1,255	62.66	200	60.06
Mexican	18	0.90	2	0.60
Puerto Rican	92	4.59	5	1.50
Cuban	4	0.20	0	0.00
South American	16	0.80	3	0.90
Central American	66	3.30	13	3.90
Other	245	12.23	47	14.11
No response	307	15.33	63	18.92
Hispanic Subtotal	196	9.79	23	6.91
<b>Total</b>	<b>2,003</b>	<b>100.00</b>	<b>333</b>	<b>100.00</b>
<i>Question: Ethnicity: Which group do you most identify with? (Check ONE selection)</i>				

Age	Volusia (n=2,003)		PSA (n=333)	
	number	percent	number	percent
Less than 18	14	0.70	3	0.90
18-24	58	2.90	4	1.20
25-35	177	8.84	21	6.31
35-44	293	14.63	49	14.71
45-54	443	22.12	70	21.02
55-64	522	26.06	84	25.23
65+	422	21.07	95	28.53
No response	74	3.69	7	2.10
<b>Total</b>	2,003	100.00	333	100.00

Marital Status	Volusia (n=2,003)		PSA (n=333)	
	number	percent	number	percent
Single	409	20.42	41	12.31
Married	1,026	51.22	199	59.67
Divorced	320	15.98	57	17.12
Widowed	191	9.54	33	9.91
No response	57	2.85	3	0.90
<b>Total</b>	2,003	100.00	333	100.00

Education	Volusia (n=2,003)		PSA (n=333)	
	number	percent	number	percent
Elementary/Middle School	38	1.90	2	0.60
High school diploma or GED	265	13.23	34	10.21
Technical/Community College	362	18.07	70	21.02
4-year College/Bachelor's degree	500	24.96	89	26.73
Graduate/Advanced degree	382	19.07	68	20.42
Some college	389	19.42	67	20.12
No Response	67	3.34	3	0.90
<b>Total</b>	2,003	100.00	333	100.00

Question: Education: Please check the highest level completed: (Check ONE selection)

Employment Status	Volusia (n=2,003)		PSA (n=333)	
	number	percent	number	percent
Employed full-time	1,221	60.96	185	55.56
Employed part-time	160	7.99	26	7.81
Unemployed	42	2.10	2	0.60
Self-Employed	50	2.50	10	3.00
Not seeking work	8	0.40	3	0.90
Retired	354	17.67	83	24.92
Home maker	44	2.20	9	2.70
Student	25	1.25	2	0.60
Other	56	2.80	9	2.70
No Response	43	2.15	4	1.20
<b>Total</b>	<b>2,003</b>	<b>100.00</b>	<b>333</b>	<b>100.00</b>

Household Income	Volusia (n=2,003)		PSA (n=333)	
	number	percent	number	percent
Less than \$10,000	166	8.29	12	3.60
\$10,000 to \$19,999	250	12.48	29	8.71
\$20,000 to \$29,999	254	12.68	42	12.61
\$30,000 to \$49,999	354	17.67	62	18.62
\$50,000 to \$74,999	372	18.57	76	22.82
\$75,000 to \$99,999	215	10.73	44	13.21
\$100,000 or more	270	13.48	47	14.11
No Response	122	6.09	21	6.31
<b>Total</b>	<b>2,003</b>	<b>100.00</b>	<b>333</b>	<b>100.00</b>

## Overall Health

Survey Question: How do you rate your overall health?

	PSA	Volusia County
Excellent	22.52%	19.07%
Good	59.16%	56.81%
Fair	12.91%	17.57%
Poor	3.90%	4.29%
Don't Know	0.30%	0.80%
No Response	1.20%	1.45%



## Things that Allow YOU to be Healthy Where You Live

Survey Question: Check up to 5 things that allow YOU to be healthy where you live

Response	PSA	Volusia County
Access to health care	64.86%	63.65%
Access to places where I can be active	52.85%	50.62%
Clean and healthy environment	48.05%	46.33%
Areas where it is easy and safe to walk	43.84%	38.04%
Access to healthy foods	42.04%	38.14%
Access to churches or other places of worship	36.94%	37.44%
Low crime rates/safe neighborhoods	36.04%	32.70%
Good place to grow old	33.63%	25.26%
Preventive health care	32.43%	29.36%
Good place to raise kids	22.22%	20.67%
Good jobs, healthy economy	16.82%	17.87%
Good education	15.02%	18.52%
Presence of advanced medical technology	15.02%	15.03%
Affordable and/or available housing options	11.11%	14.88%
Access to social and mental health services	9.61%	10.23%
Schools focused on children's health	6.01%	4.59%
Access to public transportation	5.71%	9.99%
Absence of discrimination	5.71%	6.59%
Affordable child care	3.90%	3.74%

## Health Issues YOU are Most Concerned About

Survey Question: Check up to 5 health issues YOU are most concerned about in your county:

Response	PSA	Volusia County
Addiction – alcohol or drug	42.94%	41.44%
Homelessness	41.44%	43.14%
Mental health problems	34.83%	36.00%
Unemployment	30.03%	31.15%
Adult obesity	27.93%	25.01%
Child abuse/neglect	24.62%	22.57%
Cancers	24.32%	22.57%
Smoking/tobacco use	22.22%	16.97%
Childhood obesity	19.52%	15.63%
Domestic violence	18.32%	17.12%
High blood pressure	15.62%	17.52%
Diabetes	15.62%	16.87%
Violence (rape, assault, crime, etc.)	15.62%	21.67%
Heart disease & stroke	15.32%	16.97%
End of life care	14.71%	14.53%
Access to healthy food/grocery stores	13.51%	12.43%
Dental problems	12.31%	13.08%
Environmental health, sewers, septic tanks	11.41%	10.98%
Cholesterol	11.11%	9.64%
Motor vehicle crash injuries	11.11%	10.83%
Respiratory/lung disease	9.31%	8.24%
Teenage pregnancy	7.81%	7.84%
Asthma	6.91%	8.04%
Firearms in homes	6.91%	9.59%
Lack of family/religious support systems	6.61%	6.74%
Sexually transmitted diseases	5.71%	8.14%
HIV/AIDS	3.90%	5.54%
Seatbelt use	3.30%	3.74%
Infant mortality/infant death	1.80%	2.40%

## How Safe Do You Feel?

Survey Question: How safe do you feel where you live?

	PSA	Volusia County
Very safe	50.15%	45.68%
Somewhat safe	39.94%	41.29%
Neither safe nor unsafe	3.60%	6.24%
Somewhat unsafe	2.40%	3.20%
Very unsafe	0.90%	1.00%
No Response	3.00%	2.60%

## Unhealthy Behaviors YOU are Most Concerned About

Survey Question: Check up to 5 unhealthy behaviors YOU are most concerned about in your county

Response	PSA	Volusia County
Drug abuse	58.26%	56.32%
Alcohol abuse	45.65%	45.03%
Mental health problems/stress	45.65%	47.13%
Lack of exercise	37.84%	32.80%
Being overweight/obese	36.94%	37.39%
Poor nutrition/ Poor eating habits	33.33%	36.15%
Overuse of emergency rooms	30.33%	31.65%
Unlicensed and/or unsafe drivers	29.43%	29.56%
Dropping out of school	25.53%	21.92%
Tobacco use	21.32%	22.87%
Teen sexual activity	18.62%	18.12%
Poor dental/oral health	17.72%	18.02%
Not getting "shots" to prevent disease	17.72%	16.08%
Not using birth control	10.21%	12.38%
Discrimination	8.41%	12.83%
Unsafe sex	7.81%	11.23%

## Health Services that are Difficult to Obtain

Survey Question: What health care services are difficult to obtain in your community? (Check ALL that apply)

Response	PSA	Volusia County
Mental health/counseling	38.74%	38.64%
Substance abuse services-drug & alcohol	27.33%	30.40%
Dental/oral care	23.12%	24.26%
Alternative therapy	21.92%	25.31%
Specialty doctor care (i.e. heart doctor)	21.02%	19.32%
Primary care (i.e. family doctor or walk-in clinic)	16.22%	17.37%
Vision/eye care	13.51%	12.83%
Prescriptions/medications/medical supplies	11.71%	17.12%
Preventive care (i.e. annual checkups)	9.91%	13.33%
Prenatal care	9.91%	7.64%
Family planning/birth control	9.31%	9.79%
Physical therapy/rehab therapy	7.51%	8.64%
Emergency room care	6.61%	7.79%
X-rays/mammograms	6.01%	6.29%
Lab work	3.60%	5.94%
Inpatient hospital	3.30%	4.39%

## Quality of Health Services

Survey Question: How do you rate the quality of health services in your county?

	PSA	Volusia County
Excellent	12.61%	9.84%
Good	51.65%	48.58%
Fair	27.63%	30.60%
Poor	3.90%	6.79%
Don't Know	2.70%	2.15%
No Response	1.50%	2.05%

## Barriers for YOU to Get or Stay Healthy

Survey Question: What do you feel are barriers for YOU getting or staying healthy in your county? (Check ALL that apply):

Response	PSA	Volusia County
None, I don't have any barriers	39.04%	29.41%
It's hard or expensive to cook/eat healthy	32.13%	34.57%
I work too much	28.53%	28.06%
I don't exercise	19.22%	23.66%
I don't have good health insurance	9.31%	15.08%
I don't have support from family/friends	6.31%	7.29%
It's hard to be healthy where I work	5.11%	7.14%
I don't like healthy food	4.50%	6.24%
I can't get to somewhere I can exercise	4.50%	5.89%
I can't get to somewhere that sells healthy food	3.60%	4.24%
I can't exercise outside	3.30%	6.04%
I don't know how to be healthy	1.80%	2.95%

## Barriers for YOU to get Health Care

Survey Question: What do you feel are barriers for YOU getting health care in your county? (Check ALL that apply)

Response	PSA	Volusia County
None, I don't have any barriers	43.54%	36.40%
Lack of evening and/or weekend services	23.42%	22.63%
Long waits for appointments	20.12%	21.32%
Too much worry and stress	19.82%	20.93%
Can't pay for doctor/hospital visits	16.82%	21.83%
Can't find providers that accept my insurance	11.41%	12.93%
Don't know what types of services are available	7.21%	9.64%
Lack of transportation	4.50%	6.04%
No one to turn to for help	4.50%	4.79%
Have no regular source of care	3.90%	5.59%
Agencies and people cannot be trusted	3.90%	4.64%
No one that helps me	3.00%	3.39%
I don't have insurance	2.70%	7.94%
Racial Discrimination / Lack of respect	1.50%	2.45%
I can only use the ER	1.20%	2.05%

## Health Coverage

Survey Question: How is your health care covered? (Check ALL that apply)

Response	PSA	Volusia County
Health insurance from your job/family member's job	61.56%	60.46%
Medicare	28.23%	20.03%
Health insurance that you pay on your own	16.22%	12.69%
I don't have health insurance	4.20%	8.54%
Medicaid	3.90%	5.44%
Pay cash	3.30%	5.09%
Military coverage/VA	2.70%	3.15%

## Where You Would Go if you were Concerned about Your Child


Survey Question: Where would you go if you were worried about your child's mental, physical or social health? (Check ALL that apply)

Response	PSA	Volusia County
I don't have children/dependents	47.75%	45.13%
Their doctor's office	30.33%	30.95%
Hospital emergency room in Volusia/Flagler County	9.01%	10.83%
Other family members or friends	7.81%	6.39%
I don't know	6.61%	5.14%
Local place of worship or neighborhood group	4.80%	5.49%
School counselor	4.20%	6.99%
Hospital emergency room outside of Volusia/Flagler County	3.00%	2.95%
The local health department	2.70%	2.85%
School nurse	2.70%	2.15%
Nowhere - we don't have a place to go	2.10%	2.25%
School teacher	1.50%	2.80%


## Promotional Items for web survey

**HELP GUIDE THE DECISION MAKERS IN OUR COMMUNITY TO CREATE A HEALTHIER PLACE FOR YOU AND YOUR FAMILY!**

**Take the 5 Minute Survey While You Wait!**



[communityhealthsurvey.com](http://communityhealthsurvey.com)



**Building a Healthier Tomorrow By Planning Today**


This survey is being conducted as part of the Community Health Needs Assessment process. For questions or more information please contact Julie Barrow of One Voice for Volusia at [julie@ovh.org](mailto:julie@ovh.org).

**COMMUNITY HEALTH SURVEY**

Your opinion counts. Help create a **HEALTHIER** community for **YOU** and **YOUR FAMILY**.

Your Health! Your Voice!  
Take the 5-minute Survey  
[communityhealthsurvey.com](http://communityhealthsurvey.com)

**TAKE THE SURVEY**



**Encuesta de la Comunidad**

Necesitamos su ayuda para entender la salud de Flagler y Volusia desde la perspectiva de los residentes.

Tu salud! Tu voz!  
Participar en la encuesta  
[communityhealthsurvey.com](http://communityhealthsurvey.com)

**Participar en la encuesta** ✓



## Paper Surveys available in English and Spanish

**Creating a Healthier Volusia and Flagler: 2015 Community Survey**

We need your help in better understanding Volusia's and Flagler's health from a resident's perspective. Please fill out this survey to share your opinions about health and your quality of life in your community. Your survey results will be used to inform planning initiatives as they relate to health. For more information or a copy of the final report, please contact Julie Barrow at 385-947-9301. Thank you!

- Where is your permanent residence?
  - Flagler
  - Volusia
  - Another Florida County
  - Outside of Florida
- Zip code of where you live: \_\_\_\_\_
- How do you rate your overall health? (Check **ONE** selection)
  - Excellent
  - Good
  - Fair
  - Poor
  - Don't know
- Check up to 5 things that allow **YOU** to be healthy where you live:
 

<input type="checkbox"/> Access to churches or other places of worship	<input type="checkbox"/> Good places to raise kids	<input type="checkbox"/> Absence of discrimination
<input type="checkbox"/> Access to health care	<input type="checkbox"/> Good jobs, healthy economy	<input type="checkbox"/> Presence of advanced medical technology
<input type="checkbox"/> Access to places where I can be active	<input type="checkbox"/> Good education	<input type="checkbox"/> Areas where it is easy and safe to walk
<input type="checkbox"/> Access to public transportation	<input type="checkbox"/> Low crime rates/safe neighborhoods	<input type="checkbox"/> Good places to grow old
<input type="checkbox"/> Affordable and/or available housing options	<input type="checkbox"/> Preventive health care	<input type="checkbox"/> Schools focused on children's health
<input type="checkbox"/> Access to social and mental health services	<input type="checkbox"/> Affordable child care	<input type="checkbox"/> Access to healthy foods
<input type="checkbox"/> Clean and healthy environment	<input type="checkbox"/> Other _____	
- Check up to 5 health issues **YOU** are most concerned about in your county:
 

<input type="checkbox"/> Asthma	<input type="checkbox"/> Addiction - alcohol or drug	<input type="checkbox"/> Child abuse/neglect
<input type="checkbox"/> Respiratory/lung disease	<input type="checkbox"/> Mental health problems	<input type="checkbox"/> Teenage pregnancy
<input type="checkbox"/> End of life care	<input type="checkbox"/> Cancer	<input type="checkbox"/> HIV/AIDS
<input type="checkbox"/> Environmental health, sewers, septic tanks	<input type="checkbox"/> Diabetes	<input type="checkbox"/> Domestic violence
<input type="checkbox"/> Heart disease & stroke	<input type="checkbox"/> Motor vehicle crash injuries	<input type="checkbox"/> Adult obesity
<input type="checkbox"/> Seatbelt use	<input type="checkbox"/> Firearms in homes	<input type="checkbox"/> Lack of family/religious support systems
<input type="checkbox"/> Sexually transmitted diseases	<input type="checkbox"/> Dental problems	<input type="checkbox"/> Childhood obesity
<input type="checkbox"/> High blood pressure	<input type="checkbox"/> Smoking/tobacco use	<input type="checkbox"/> Violence (rape, assault, crime, etc)
<input type="checkbox"/> Unemployment	<input type="checkbox"/> Homelessness	<input type="checkbox"/> Access to healthy food/grocery stores
<input type="checkbox"/> Cholesterol	<input type="checkbox"/> Infant mortality/infant death	<input type="checkbox"/> Other _____
- How safe do you feel where you live?
  - Very safe
  - Somewhat safe
  - Neither safe nor unsafe
  - Somewhat unsafe
  - Very unsafe
- Check up to 5 unhealthy behaviors **YOU** are most concerned about in your county:
 

<input type="checkbox"/> Alcohol abuse	<input type="checkbox"/> Lack of exercise	<input type="checkbox"/> Tobacco use
<input type="checkbox"/> Poor nutrition/Poor eating habits	<input type="checkbox"/> Not getting "shots" to prevent disease	<input type="checkbox"/> Unlicensed and/or unsafe drivers
<input type="checkbox"/> Dropping out of school	<input type="checkbox"/> Not using birth control	<input type="checkbox"/> Unsafe sex
<input type="checkbox"/> Drug abuse	<input type="checkbox"/> Discrimination	<input type="checkbox"/> Being overweight/obese
<input type="checkbox"/> Teen sexual activity	<input type="checkbox"/> Overuse of emergency rooms	<input type="checkbox"/> Mental health problems/stress
<input type="checkbox"/> Poor dental/oral health	<input type="checkbox"/> Other _____	
- What health care services are difficult to obtain in your community? (Check **ALL** that apply):
 

<input type="checkbox"/> Alternative therapy	<input type="checkbox"/> Prescription/medications/medical supplies	<input type="checkbox"/> Lab work
<input type="checkbox"/> Dental/oral care	<input type="checkbox"/> Preventive care (i.e. annual check ups)	<input type="checkbox"/> Mental health/counseling
<input type="checkbox"/> Emergency room care	<input type="checkbox"/> Primary care (i.e. family doctor or walk-in clinic)	<input type="checkbox"/> Physical therapy/rehab therapy
<input type="checkbox"/> Family planning/birth control	<input type="checkbox"/> Specialty doctor care (i.e. heart doctor)	<input type="checkbox"/> Vision/eye care
<input type="checkbox"/> Inpatient hospital	<input type="checkbox"/> Substance abuse services-drug & alcohol	<input type="checkbox"/> Prenatal care
<input type="checkbox"/> X-rays/mammograms	<input type="checkbox"/> Other _____	
- How do you rate the quality of health services in your county?
  - Excellent
  - Good
  - Fair
  - Poor
  - Don't Know

Thank you for taking the time to complete this survey!

**Creando un Volusia y Flagler más saludable: Encuesta de la Comunidad 2015**

Necesitamos su ayuda para entender la salud de Volusia y Flagler desde la perspectiva de los residentes. Por favor complete esta encuesta para compartir sus opiniones sobre la salud y calidad de vida de la comunidad. Los resultados de esta encuesta serán usados para informar y planificar iniciativas relacionadas a salud. Para más información o para obtener una copia del reporte final, por favor contacte a Julie Barrow llamando al 385-947-9301. ¡Gracias!

- ¿Dónde usted vive?
  - Flagler
  - Volusia
  - Otro Condado de Florida
  - Fuera de Florida
- ¿Cuál es el código de área donde vive? \_\_\_\_\_
- ¿Cómo usted califica su salud en general? (Seleccione **UNA** opción)
  - Excelente
  - Buena
  - Razonable
  - Pobre
  - No sé
- Escoja hasta 5 opciones que le permiten a usted estar saludable donde vive:
 

<input type="checkbox"/> Acceso a iglesias o lugares para congregarse	<input type="checkbox"/> Buen lugar para criar a los niños	<input type="checkbox"/> Ausencia de discriminación
<input type="checkbox"/> Acceso a cuidado de la salud	<input type="checkbox"/> Buenos trabajos y economía saludable	<input type="checkbox"/> Presencia de Tecnología Médica avanzada
<input type="checkbox"/> Acceso a lugares donde puede estar activo	<input type="checkbox"/> Buena educación	<input type="checkbox"/> Áreas donde se puede caminar fácil y seguro
<input type="checkbox"/> Acceso a transporte pública	<input type="checkbox"/> Baja incidencia de crímenes/vecindarios seguros	<input type="checkbox"/> Servicios de salud preventiva
<input type="checkbox"/> Opciones de vivienda disponible y accesible	<input type="checkbox"/> Servicios de salud preventiva	<input type="checkbox"/> Escuelas concentradas en la salud de los niños
<input type="checkbox"/> Acceso a servicios mentales y sociales	<input type="checkbox"/> Cuidado de niños (guardería) accesible	<input type="checkbox"/> Acceso a comidas saludables
<input type="checkbox"/> Ambiente sano y saludable	<input type="checkbox"/> Otro _____	
- Escoja hasta 5 problemas de salud que le conciernen/preocupan a USTED en el condado donde reside:
 

<input type="checkbox"/> Asma	<input type="checkbox"/> Adicción - alcohol o drogas	<input type="checkbox"/> Abuso de niños/ Negligencia
<input type="checkbox"/> Enfermedad Respiratoria/Pulmones	<input type="checkbox"/> Problemas de salud mental	<input type="checkbox"/> Embarazos en adolescentes
<input type="checkbox"/> Cuidado final de la vida	<input type="checkbox"/> Cáncer	<input type="checkbox"/> VIH/SIDA
<input type="checkbox"/> Salud ambiental, alcantarillados, pozos sépticos	<input type="checkbox"/> Diabetes	<input type="checkbox"/> Violencia doméstica
<input type="checkbox"/> Enfermedad/Ataque al corazón	<input type="checkbox"/> Lesiones/heridas en accidentes de carro	<input type="checkbox"/> Obesidad en adultos
<input type="checkbox"/> Uso de cinturones de seguridad	<input type="checkbox"/> Armas de fuego en los hogares	<input type="checkbox"/> Falta de sistemas de apoyo a las familias
<input type="checkbox"/> Enfermedades de transmisión sexual	<input type="checkbox"/> Problemas dentales	<input type="checkbox"/> Obesidad infantil
<input type="checkbox"/> Presión arterial alta	<input type="checkbox"/> Fumar/uso de tabaco	<input type="checkbox"/> Violencia (violación, asalto, delincuencia)
<input type="checkbox"/> Desempleo	<input type="checkbox"/> Falta de vivienda	<input type="checkbox"/> Acceso a supermercados/comida saludable
<input type="checkbox"/> Colesterol	<input type="checkbox"/> Mortalidad Infantil/Muerte de infantes	<input type="checkbox"/> Otro _____
- ¿Cuán seguro se siente donde usted vive?
  - Muy Seguro
  - Algo seguro
  - Ni seguro/ni inseguro
  - Algo inseguro
  - Muy inseguro
- Seleccione hasta 5 comportamientos poco saludables que le preocupan a USTED sobre su condado:
 

<input type="checkbox"/> Abuso de alcohol	<input type="checkbox"/> Falta de ejercicio	<input type="checkbox"/> Uso de tabaco
<input type="checkbox"/> Pobre nutrición/hábitos alimenticios	<input type="checkbox"/> No vacunarse para prevenir enfermedades	<input type="checkbox"/> Conductores poco seguros o sin licencia
<input type="checkbox"/> Salirse de la escuela	<input type="checkbox"/> Falta de uso de métodos anticonceptivos	<input type="checkbox"/> Sexo sin protección
<input type="checkbox"/> Abuso de drogas	<input type="checkbox"/> Discriminación	<input type="checkbox"/> Estar sobre peso u obeso
<input type="checkbox"/> Actividad sexual en adolescentes	<input type="checkbox"/> Uso excesivo de la sala de emergencias	<input type="checkbox"/> Problemas de salud mental/estrés
<input type="checkbox"/> Pobre salud dental/oral	<input type="checkbox"/> Otro _____	
- ¿Cuáles servicios de salud son difíciles de obtener en su comunidad? (Escoja **TODAS** las que apliquen):
 

<input type="checkbox"/> Terapia alternativa	<input type="checkbox"/> Recetas/medicamentos/suministros médicos	<input type="checkbox"/> Análisis de laboratorios
<input type="checkbox"/> Cuidado dental/oral	<input type="checkbox"/> Cuidado preventivo (Ej. Exámenes anuales)	<input type="checkbox"/> Salud mental/consejería
<input type="checkbox"/> Cuidado de sala de emergencia	<input type="checkbox"/> Cuidado primario (Ej. Doctor de familia o clínicas con atención sin cita previa)	<input type="checkbox"/> Terapia física/terapia de rehabilitación
<input type="checkbox"/> Planificación familiar/Control de natalidad	<input type="checkbox"/> Médicos especialistas (Ej. cardiólogos)	<input type="checkbox"/> Visión/cuidado de ojos

¡Gracias por tomar tiempo en completar la encuesta!

# Community Survey Instrument

## Creating a Healthier Volusia and Flagler: 2015 Community Survey

We need your help in better understanding Volusia's and Flagler's health from a resident's perspective. Please fill out this survey to share your opinions about health and your quality of life in your community. Your survey results will be used to inform planning initiatives as they relate to health. For more information or a copy of the final report, please contact Julie Barrow at 386-947-8301. Thank you!

**1. Where is your permanent residence?**

- Flagler       Volusia       Another Florida County       Outside of Florida

**2. Zip code of where you live:** \_\_\_\_\_

**3. How do you rate your overall health? (Check ONE selection)**

- Excellent       Good       Fair       Poor       Don't know

**4. Check up to 5 things that allow YOU to be healthy where you live:**

- |  |   |  |
|--|---|--|
| <input type="checkbox"/> Access to churches or other places of worship | <input type="checkbox"/> Good place to raise kids           | <input type="checkbox"/> Absence of discrimination               |
| <input type="checkbox"/> Access to health care                         | <input type="checkbox"/> Good jobs, healthy economy         | <input type="checkbox"/> Presence of advanced medical technology |
| <input type="checkbox"/> Access to places where I can be active        | <input type="checkbox"/> Good education                     | <input type="checkbox"/> Areas where it is easy and safe to walk |
| <input type="checkbox"/> Access to public transportation               | <input type="checkbox"/> Low crime rates/safe neighborhoods | <input type="checkbox"/> Good place to grow old                  |
| <input type="checkbox"/> Affordable and/or available housing options   | <input type="checkbox"/> Preventive health care             | <input type="checkbox"/> Schools focused on children's health    |
| <input type="checkbox"/> Access to social and mental health services   | <input type="checkbox"/> Affordable child care              | <input type="checkbox"/> Access to healthy foods                 |
| <input type="checkbox"/> Clean and healthy environment                 | <input type="checkbox"/> Other _____                        |  |

**5. Check up to 5 health issues YOU are most concerned about in your county:**

- |   |  |   |
|---|--|---|
| <input type="checkbox"/> Asthma                                     | <input type="checkbox"/> Addiction – alcohol or drug   | <input type="checkbox"/> Child abuse/neglect                      |
| <input type="checkbox"/> Respiratory/lung disease                   | <input type="checkbox"/> Mental health problems        | <input type="checkbox"/> Teenage pregnancy                        |
| <input type="checkbox"/> End of life care                           | <input type="checkbox"/> Cancers                       | <input type="checkbox"/> HIV/AIDS                                 |
| <input type="checkbox"/> Environmental health, sewers, septic tanks | <input type="checkbox"/> Diabetes                      | <input type="checkbox"/> Domestic violence                        |
| <input type="checkbox"/> Heart disease & stroke                     | <input type="checkbox"/> Motor vehicle crash injuries  | <input type="checkbox"/> Adult obesity                            |
| <input type="checkbox"/> Seatbelt use                               | <input type="checkbox"/> Firearms in homes             | <input type="checkbox"/> Lack of family/religious support systems |
| <input type="checkbox"/> Sexually transmitted diseases              | <input type="checkbox"/> Dental problems               | <input type="checkbox"/> Childhood obesity                        |
| <input type="checkbox"/> High blood pressure                        | <input type="checkbox"/> Smoking/tobacco use           | <input type="checkbox"/> Violence (rape, assault, crime, etc)     |
| <input type="checkbox"/> Unemployment                               | <input type="checkbox"/> Homelessness                  | <input type="checkbox"/> Access to healthy food/grocery stores    |
| <input type="checkbox"/> Cholesterol                                | <input type="checkbox"/> Infant mortality/infant death | <input type="checkbox"/> Other _____                              |

**6. How safe do you feel where you live?**

- Very safe       Somewhat safe       Neither safe nor unsafe       Somewhat unsafe       Very unsafe

**7. Check up to 5 unhealthy behaviors YOU are most concerned about in your county:**

- |   |   |   |
|---|---|---|
| <input type="checkbox"/> Alcohol abuse                      | <input type="checkbox"/> Lack of exercise                       | <input type="checkbox"/> Tobacco use                      |
| <input type="checkbox"/> Poor nutrition/ Poor eating habits | <input type="checkbox"/> Not getting "shots" to prevent disease | <input type="checkbox"/> Unlicensed and/or unsafe drivers |
| <input type="checkbox"/> Dropping out of school             | <input type="checkbox"/> Not using birth control                | <input type="checkbox"/> Unsafe sex                       |
| <input type="checkbox"/> Drug abuse                         | <input type="checkbox"/> Discrimination                         | <input type="checkbox"/> Being overweight/obese           |
| <input type="checkbox"/> Teen sexual activity               | <input type="checkbox"/> Overuse of emergency rooms             | <input type="checkbox"/> Mental health problems/stress    |
| <input type="checkbox"/> Poor dental/oral health            | <input type="checkbox"/> Other _____                            |   |

**8. What health care services are difficult to obtain in your community? (Check ALL that apply):**

- |  |  |   |
|--|--|---|
| <input type="checkbox"/> Alternative therapy           | <input type="checkbox"/> Prescriptions/medications/medical supplies          | <input type="checkbox"/> Lab work                       |
| <input type="checkbox"/> Dental/oral care              | <input type="checkbox"/> Preventive care (i.e. annual check ups)             | <input type="checkbox"/> Mental health/counseling       |
| <input type="checkbox"/> Emergency room care           | <input type="checkbox"/> Primary care (i.e. family doctor or walk-in clinic) | <input type="checkbox"/> Physical therapy/rehab therapy |
| <input type="checkbox"/> Family planning/birth control | <input type="checkbox"/> Specialty doctor care (i.e. heart doctor)           | <input type="checkbox"/> Vision/eye care                |
| <input type="checkbox"/> Inpatient hospital            | <input type="checkbox"/> Substance abuse services-drug & alcohol             | <input type="checkbox"/> Prenatal care                  |
| <input type="checkbox"/> X-rays/mammograms             | <input type="checkbox"/> Other _____   |   |

**9. How do you rate the quality of health services in your county?**

- Excellent       Good       Fair       Poor       Don't Know

Thank you for taking the time to complete this survey!



**Creating a Healthier Volusia and Flagler: 2015 Community Survey**

**10. What do you feel are barriers for YOU getting or staying healthy in your county? (Check ALL that apply):**

- |   |  |   |
|---|--|---|
| <input type="checkbox"/> I work too much                          | <input type="checkbox"/> I don't have good health insurance      | <input type="checkbox"/> I can't get to somewhere that sells healthy food |
| <input type="checkbox"/> It's hard to be healthy where I work     | <input type="checkbox"/> I don't know how to be healthy          | <input type="checkbox"/> I can't exercise outside                         |
| <input type="checkbox"/> I don't have support from family/friends | <input type="checkbox"/> I don't exercise                        | <input type="checkbox"/> None, I don't have any barriers                  |
| <input type="checkbox"/> I don't like healthy food                | <input type="checkbox"/> I can't get to somewhere I can exercise | <input type="checkbox"/> It's hard or expensive to cook/eat healthy       |
| <input type="checkbox"/> Other _____                              |  |   |

**11. What do you feel are barriers for YOU getting health care in your county? (Check ALL that apply):**

- |  |  |  |
|--|--|--|
| <input type="checkbox"/> Lack of transportation                          | <input type="checkbox"/> Have no regular source of care          | <input type="checkbox"/> Agencies and people can not be trusted  |
| <input type="checkbox"/> Can't pay for doctor/hospital visits            | <input type="checkbox"/> Lack of evening and/or weekend services | <input type="checkbox"/> Racial Discrimination / Lack of respect |
| <input type="checkbox"/> Can't find providers that accept my insurance   | <input type="checkbox"/> Long waits for appointments             | <input type="checkbox"/> I can only use the ER                   |
| <input type="checkbox"/> Don't know what types of services are available | <input type="checkbox"/> No one that helps me                    | <input type="checkbox"/> I don't have insurance                  |
| <input type="checkbox"/> Too much worry and stress                       | <input type="checkbox"/> No one to turn to for help              | <input type="checkbox"/> None, I don't have any barriers         |
| <input type="checkbox"/> Other _____                                     |  |  |

**12. How is your health care covered? (Check ALL that apply):**

- |  |   |                                   |
|--|---|-----------------------------------|
| <input type="checkbox"/> Health insurance offered from your job or a family member's job | <input type="checkbox"/> Medicare             | <input type="checkbox"/> Pay cash |
| <input type="checkbox"/> Health insurance that you pay on your own                       | <input type="checkbox"/> Military coverage/VA | <input type="checkbox"/> Medicaid |
| <input type="checkbox"/> I don't have health insurance                                   | <input type="checkbox"/> Other _____          |                                   |

**13. Where would you go if you were worried about your child's mental, physical or social health? (Check ALL that apply):**

- |   |  |   |
|---|--|---|
| <input type="checkbox"/> I don't have children/dependents       | <input type="checkbox"/> Hospital emergency room outside of Volusia/Flagler County | <input type="checkbox"/> School nurse     |
| <input type="checkbox"/> Their doctor's office                  | <input type="checkbox"/> The local health department                               | <input type="checkbox"/> School teacher   |
| <input type="checkbox"/> No where - we don't have a place to go | <input type="checkbox"/> Hospital emergency room in Volusia/Flagler County         | <input type="checkbox"/> School counselor |
| <input type="checkbox"/> Other family members or friends        | <input type="checkbox"/> Local place of worship or neighborhood group              | <input type="checkbox"/> I don't know     |
| <input type="checkbox"/> Other _____                            |  |   |

**14. Age:**

- less than 18    18-24    25-34    35-44    45-54    55-64    65+

**15. Marital Status**

- Single    Married    Divorced    Widowed

**16. Gender:**  Male    Female

**17. Race: Which group do you most identify with? (Check ONE selection)**

- Black/African American    White/Caucasian    Asian/Pacific Islander    Other \_\_\_\_\_

**18. Ethnicity: Which group do you most identify with? (Check ONE selection)**

- Not Hispanic/Latino    Mexican    Puerto Rican    Cuban    South American  
 Central American    Other \_\_\_\_\_

**19. Education: Please check the highest level completed: (Check ONE selection)**

- |   |   |  |
|---|---|--|
| <input type="checkbox"/> Elementary/Middle School         | <input type="checkbox"/> High school diploma or GED | <input type="checkbox"/> Technical/Community College |
| <input type="checkbox"/> 4 year College/Bachelor's degree | <input type="checkbox"/> Graduate/Advanced Degree   | <input type="checkbox"/> Some College                |

**20. Employment Status: (Check ONE selection):**

- |   |   |                                     |  |   |
|---|---|-------------------------------------|--|---|
| <input type="checkbox"/> Employed Full-time | <input type="checkbox"/> Employed Part-time | <input type="checkbox"/> Unemployed | <input type="checkbox"/> Self-employed | <input type="checkbox"/> Not seeking work |
| <input type="checkbox"/> Retired            | <input type="checkbox"/> Home maker         | <input type="checkbox"/> Student    | <input type="checkbox"/> Other _____   |   |

**21. Household Income: (Check ONE selection)**

- |   |   |   |   |
|---|---|---|---|
| <input type="checkbox"/> Less than \$10,000   | <input type="checkbox"/> \$10,000 to \$19,999 | <input type="checkbox"/> \$20,000 to \$29,999 | <input type="checkbox"/> \$30,000 to \$49,999 |
| <input type="checkbox"/> \$50,000 to \$74,999 | <input type="checkbox"/> \$75,000 to \$99,999 | <input type="checkbox"/> \$100,000 or more    |   |

Thank you for taking the time to complete this survey!

## Appendix B: One Voice for Volusia Coalition Community Meeting Attendees

**April 13, 2016 at the Florida Department of Health in Volusia County**

Name	Agency
Abraham, Lydia	Volunteers for Community Impact
Acevedo, Kathy	Friends of Library Access
Anthony, Wendy	Health Planning Council of Northeast Florida
Apicella, Vickie	Daytona State College-Fresh Start Program
Barbosa, Maria	DIVAS International
Barnes, Kimberly	UCF Student/OVFV Intern
Barnette, Kate	Volusia County Schools
Bass, Maia	Children's Home Society
Beauregard, Micky	Domestic Abuse Council
Berardi, Lois	Community Resident
Biro, Edie	VOTRAN
Blair, Marianne	Volusia County Schools
Bodziak, Ann	Florida Department of Health in Volusia County
Bolin, Jarrett	Magellan Complete Care
Boswell, Patricia	FDOH-Volusia
Boyle, Bryan	Boyle Financial
Bruno, Frank	Volusia COAD (Community Organizations Active in Disaster)
Bryant III, Charles	City of Daytona Beach Redevelopment Dept.
Bullard, Sam	Children's Home Society
Burgess-Hall, Nancy	Halifax Council of the Blind
Case, Joyce	Health Planning Council of Northeast Florida
Catlett, Darlyne	Florida Hospital Community Care
Cerullo, Jean	National Federation of the Blind
Cerullo, Peter	Division of Blind Services/National Federation of the Blind
Chaisson, Jeff	Christian Center for Community Connections
Chrapek, Karen	Darryl Strawberry Recovery Center
Clarke, Sharon	Magellan Complete Care
Coalson, Carl	SEDNET-Volusia, Flagler, Putnam, and St. John's Counties
Collett, Kyle	MTM, Inc.
Crowe, Allison	UF Child Protection Team
Dasilva, Priscilla	Florida Hospital Community Care
Davis, Belinda	Community Resident
Davitt, Lisa	PACE Center for Girls
Deegan, Tiffany	CHS
DeVane, Steven	Duvall Home
Dick, Raymi	Darryl Strawberry Recovery Center
Edgcomb, Courtney	United Way of Volusia & Flagler Counties
Edwards-Johnson, Angela	UCF-Daytona Beach
Esposito, Shelby	Daytona Beach Health and Rehabilitation Center
Faison, Tracy	Pediatric Health Choice
Ford, Harold	Molina Healthcare
Fredsall, Cheryl	Daytona Beach Health and Rehab
German, Akisia	Bethune Cookman University-Odesa Chambliss Center

Gillikin, Doug	James Moore & Co.
Glazner, Phil	Volusia County Pharmacy Association
Graser, Tegan	Children's Home Society
Hall, Doug	DB Mayor's Alliance for Persons with Disabilities/Friends of Library Access, Inc.
Hall, Khalilah	Aetna/Coventry One
Husband, Lauren	Florida Department of Health in Volusia County
Husbands, Ashleigh	FL LINC Project
Huser, Lisa	Pathfinder Advocacy Center
Jackson, Sheila	United Way of Volusia-Flagler Counties
James, Patricia	County of Volusia-Human Services
Jennings, William	Volusia County Department of Corrections
Johnson, Catherine	Volunteers for Community Impact
Johnson, Chantel	Daytona Beach Health and Rehabilitation Center
Johnson, Lisa	PACE Center for Girls
Kirvai, John	State AB&T
Kress, Victoria	Stewart Marchman Act Behavioral Healthcare
Lawson, Devonte	The Salvation Army
Lee, Diana	Bethune Cookman University
Lewandowski, Jillian	Department of Juvenile Justice
Lill, Mica	Volusia/Flagler YMCA
Loach, Roshia	The Healthy Start Coalition of Flagler and Volusia
Long, Maria	The Healthy Start Coalition of Flagler and Volusia
Luis Torres, Angel	Pathfinder Advocacy Center
Maddox, Dorothy	Housing Authority of the City of Daytona Beach
Martin-Morgan, Dianne	Volusia County Schools
Massey, Christopher	Circuit 7
McGinley, Loren	CareerSource Flagler-Volusia
McMullin, Lori	Conklin Center
Medina, Michelle	Florida Hospital
Merrithew, Damiel	Department of Juvenile Justice
Miller, Allison	Early Learning Coalition
Nichols, Elexia	SMA Behavioral-Beach House
Nightingale, Joanna	Pediatric Health Choice
Papaj, Andrea	Eldersource/SHINE
Perry, Andy	Wise Resource
Philio, Cher	Halifax Health – Healthy Communities
Pietrewicz, Dawn	Health Planning Council of Northeast Florida
Poole, Melissa	Family Health Source
Preston, Gloria	Florida Health Care Plans
Prince, Heather	Stewart-Marchman-Act Behavioral Healthcare
Prince-Mack, Ebony	SMA Beach House
Reddick, Shalacka	Community Resident
Ringue, Amy	Daytona State College
Rivera, Lisa	MTM, Inc.
Roberts, Joann	Adoption and Family Support Center
Robinson, Cindy	Florida Health Care Plans
Roebing, Christina	United Way of Volusia-Flagler
Rondeau, Ron	Florida Department of Health in Volusia County
Royall, Denise	Domestic Abuse Council
Ryals, Lisa	Boys and Girls Clubs of Volusia and Flagler Counties
Salazar, Angela	Family Health Source

Sally, Steve	The House Next Door
Sentelik, Carolyn	Stewart-Marchman-Act Behavioral Healthcare
Sinnott, Lynn	Easter Seals Volusia Flagler
Small, Vetrys	Children's Home Society
Smith, Thalia	The Healthy Start Coalition of Flagler and Volusia
Soule, Elizabeth	Volusia County Teen Court
Stout, Owanna	BAYS Florida
Szabo, John	AB&T
Taylor, Heather	Miss Wheelchair Florida
Taylor, Kim	Guardian ad Litem Program
Toubman, Jo	NTF
Walsh, Anthony	James Moore & Co
Warriner, Sharon	Children's Advisory Board
White, Theresa	Early Steps
Williams, Johnny	Health Rehab
Wise, Teresa	Wise Resource
Wilary, Loretta	United Way of Volusia Flagler
Young, Kim	Break the Cycle
Barrow, Julie	Executive Director
Kennedy, Lynn	Project Director
Conroy, Hope	Youth Outreach Coordinator
Dinda, Nichole	Clerical Assistant
Baird, Carrie	CHNA Consultant, Baird Solutions

## Appendix C: Full Asset Inventory

### Efforts that are successfully addressing ADULT BEHAVIORAL HEALTH in Volusia County (Include specific resources, grants, groups, programs and services, organizations, efforts to impact policies/laws, system improvement efforts, collaborative groups, other strategic plans etc.)

- Break the Cycle Outpatient Program 724 S. Beach St. Daytona Beach, Fl. 32114
- The Chiles Academy
- SMA walk-in is great resource kind of like urgent care for BH
- Stewart Marchman Act Behavioral Healthcare
  - Adult Outpatient Substance Abuse Program (AOP)
  - Physician Services Medication Outpatient Program
  - Florida Assertive Community Treatment (FACT) Program
  - Anti-Drug Initiative (ADI)
  - Forensic Comprehensive Community Support Team (FCCST)
  - Family Intervention Services (FIS)
  - Family Intensive Treatment Team (FITT)
  - Community/Court Liaison (Outreach) Services
  - SMA Treatment Team at the Volusia County Corrections Department
  - Pharmacy
  - Enrichment Program Industries for persons with dev. disabilities or co-occurring disorders
  - 24-hour Crisis Stabilization and Detox Services and Screenings
  - Reality House, Re-Entry and Work Release Programs
  - Family Education Programs, Speakers Bureau and Mental Health 1<sup>st</sup> Aid
- Treatment availability
- Substance Abuse Task Force
- Halifax Urban Ministries
- Daryl Strawberry Recovery Center
- ER's treat those wanting to hurt themselves or someone else.
- Access to information on assistance available
- Volusia-Flagler Behavioral Consortium and Circuit 7 Behavioral Consortium
- Narcotics Anonymous has almost 100 meetings in the area <http://www.na.org/MeetingSearch/>
- AA Meeting Locations
- Healthy Start Coalition of Volusia and Flagler Counties
- Affordable medical mental health care to include alternative treatments beyond hospitalization
- One Voice for Volusia
- Halifax
- The Community Connector
- Faith based counseling centers and private counseling opportunities
- Volusia County Moms
- Salvation Army
- Career Resource Center
- NAMI
- LSF (Lutheran Services of Florida)
- Transition Team Meetings

## **What more could/should be done to successfully address ADULT BEHAVIORAL HEALTH in Volusia County?**

- Open a detoxification / crisis unit.
- Enhanced screening opportunities
- Free transportation
- More options for low-cost or free therapy services.
- No help for some who accessed BH via SMA walk-in and needs meds to bridge the time it takes for the long-term meds to kick in. This person could be in mental hell for 3 or more weeks. By that time, they may want to hurt themselves.
- Collaborate efforts for the common good of the community
- Fire Service is beginning behavioral health programs around the country as they are usually the first to contact a potential patient
- More Drop-In Centers (we might have 2?)
- De-stigmatization
- Sharing of information between and among agencies
- More intensive outpatient options.
- Treat each case/individual separately as they have different needs
- Need a central receiving facility
- increased in- and out-patient treatment facilities
- One stop centrally located satellite site serving this population
- Don't use the "one size fits all" for this issue - there are too many factors to consider for each individual
- Crisis Stabilization Funding tied to Intensive In-Home therapy services once stabilized
- Co-occurring counseling services
- Decreased planning studies, more active intervention
- Mobile crisis teams

## **Efforts that are successfully addressing YOUTH MENTAL HEALTH in Volusia County (Include specific resources, grants, groups, programs and services, organizations, efforts to impact policies/laws, system improvement efforts, collaborative groups, other strategic plans etc.)**

- The Chiles Academy and MicroSociety
- SMA; CINS/FINS, BEACH House and Residential Adolescent Program and ADOP
- Behavioral Screening Tools now on Volusia County Schools' report cards and Problem Solving Teams and The Volusia County Behavioral Initiative (VCBI)
- Life Coach Barbie Reed
- One Voice for Volusia Youth Substance Abuse Prevention Programs and NOPE Task Force
- Circuit Seven System of Care - Evelyn Lynam
- Children's Home Society, Devereux, SMA, Halifax Behavioral, Circle of Friends, House Next Door
- Circuit Seven Early Childhood Court Team
- HBS Halifax Behavior Services
- Healthy Start Family Place and Healthy Families
- Community Partnership for Children/Community Based Care
- Pediatricians
- ADAPT Behavioral Services
- Programs offered through Domestic Abuse Council

- Cafe' Dialogues and Healthy Start Initiatives
- E.S.P Case management
- Florida United Methodist Children's Home
- PACE Center for Girls, Inc.
- Help Me Grow/211 screening tools and referrals
- School Health Advisory Committee (SHAC)
- Big Bear Behavioral Health, Inc., Presbyterian Counseling Center, Port Orange Counseling Center, Durden Consulting, Impower
- Grief Related: GriefShare, Begin Again, Hospice, Tears Foundation, Hospital Support Groups, etc.  
<http://www.volusia.com/local-support-groups/>
- Volusia Department of Juvenile Justice Council
- Prevention: Boys and Girls Clubs, Mentoring Programs, Youth Sports Leagues/Programs, PAL, After School Programs, Arts programs, Recreation Departments, Clubs, Youth Groups

### **What more could/should be done to successfully address YOUTH MENTAL HEALTH in Volusia County?**

- Expand in- and out-patient treatment facilities
- Increase prevention
- Earlier diagnosis.
- Getting adults involved in youth programs to keep kids growing
- Increased and easy access to information for services
- A Central Receiving Facility
- Expand screening opportunities
- Coordination of services
- Availability of therapy in schools.
- Education for parents, grandparents and extended family members
- Social Norming and Stigma Reduction regarding Mental Health and increasing youth protective factors
- Campaign to rid the stigma of Mental Health diseases
- Promoting youth service organizations
- Trauma Screening by pediatricians and other first contact professionals
- Tying treatment funding for youth mental health when parent's behavioral health is compromised

### **Capacity Issues and Identified Gaps in services identified by the Volusia/Flagler Behavioral Consortium:**

- Children's Community Action Team (Behavioral Health Consortium Priority Top Priority)
- Intensive Crises Counseling Program/Intensive In-Home Family Services (Behavioral Health Consortium Top Priority)
- Family Services Planning Team funded/redefined for our area (Behavioral Health Consortium Top Priority)
- Transitional Youth Services linked to FSPT and other services (Behavioral Health Consortium Top Priority)
- Primary Prevention Services for children funding (Behavioral Health Consortium Top Priority)
- Uniform referral process and form
- Resource Guide
- Targeted Case Management (TCM)
- Psychiatric Evaluation and services
- Psychiatric Medication Management
- Therapeutic Group Homes

- Residential Statewide Inpatient Psychiatric Beds- SIPP (regional issue)
- Respite Beds (6 added to SMA through LSF in April 2016)
- Autism Spectrum Disorders (ASD) Services
- Mobile Crisis Team
- Specialized Respite for CSEC (children who have been sexually exploited) Victims
- Transportation to PHP Program
- Promotion of Universal Awareness of Mental Health Issues/identified youth sooner through screenings

**Efforts that are successfully addressing CHRONIC DISEASE-CARDIOVASCULAR DISEASES & DIABETES in Volusia County (Include specific resources, grants, groups, programs and services, organizations, efforts to impact policies/laws, system improvement efforts, collaborative groups, other strategic plans etc.)**

- Midtown Eco-Village and The Kale Cafe
- Volusia County Schools Wellness Program
- Local hospitals
- YMCA Programs - Health and Wellness that includes Diabetes Prevention Program and Nutrition programs
- Local schools
- Florida Hospital - Creation Health, Smoking Cessation, Seminars, Workshops, Educational Campaigns
- Seminars and education programs offered by the hospitals and health departments
- Popularity and ease of use of fitness and health tracking "apps"
- Healthy Volusia and Partnerships with the Florida Department of Health
- Worksite Wellness
- Northeast Florida AHEC (Diabetes and Smoking Cessation)
- Mayor's Health Challenges across Volusia

**What more could/should be done to successfully address CHRONIC DISEASE-CARDIOVASCULAR DISEASES & DIABETES in Volusia County?**

- Collective impact effort on exercise, healthy food options, and regular screenings
- Continuing to address the problem and educate the population
- Increase Educational Opportunities
- Lower cost insulin resources
- Access to more affordable fresh fruits and vegetables
- Through Fire Department Community Paramedicine, agencies can visit the most frequently seen diabetics to reduce their occurrence of crisis.
- FD can also evaluate food situation at home and offer information to maintain a healthy diet
- Work place policies and insurance premium fees applied for life-style choices that lead to chronic disease
- Healthy living programs to get and keep kids moving
- More diabetes education



**Efforts that are successfully addressing ACCESS TO HEALTH CARE SERVICES in Volusia County (Include specific resources, grants, groups, programs and services, organizations, efforts to impact policies/laws, system improvement efforts, collaborative groups, other strategic plans etc.)**

- Jesus Clinic and Volusia Volunteers in Medicine
- Two Family Care Coordinators at The Chiles Academy and Early Head Start
- Good Samaritan Clinic
- Healthy Start Family Place
- Walk in Clinics for quick care - new FH CentraCares
- Health Navigators to help with insurance coverage access
- Local Health Department
- Healthy Families
- Halifax Community Clinics
- Florida Shots
- 211live.org
- Star Center
- COA services for Seniors and multiple hospices for palliative care
- HUM and Salvation Army and Halifax Hospital and other partners providing Healthcare to the homeless
- Doctors' offices now open on Saturdays
- Halifax Health Behavioral-Support groups open to the public
- Florida Breast and Cervical Cancer Prevention/Early Detection Program
- Halifax Oncology Center "ROC"
- Project Warm
- One Voice for Volusia (OVFV)

**What more could/should be done to successfully address ACCESS TO HEALTH CARE SERVICES in Volusia County?**

- Mobile services for screenings in collaboration with community centers, churches, schools, etc. in more rural parts of county
- Transportation
- Better public transportation between the west side and east side. Takes too long to go across county. Could be 2 plus hours one way. Maybe hospitals provide community benefit by funding more Votran Gold type transportation.
- The west side of the county needs more specialists and quick-care.
- Extended hours for service and weekend hours without having to go to an Urgent Care or Hospital which is more expensive
- Find providers able to alter hours to accommodate the working poor, e.g. after 8-5 hours and weekends
- Fire Department Community Paramedicine - assist patients with access to medications, understanding discharge orders, and accessing available social services
- Update 211live.org with more resources and show office hours under listing
- Satellite locations for WIC and child health care
- Doctors need to be free to practice medicine without the approval of the insurance companies.
- Study why people go to emergency departments, if it's convenience, what is inconvenient about non-ER providers?

**Efforts that are successfully addressing HEALTHY EATING & PHYSICAL ACTIVITY in Volusia County (Include specific resources, grants, groups, programs and services, organizations, efforts to impact policies/laws, system improvement efforts, collaborative groups, other strategic plans etc.)**

- 5210, YMCA's programs and Fitness Programs and Gyms in the community
- Boys and Girls clubs
- Sports leagues
- Bikes and Trails
- Midtown EcoVillage, The Kale Cafe
- The Chiles Academy and Early Head Start's nutrition program
- Local churches
- Volusia County moms
- Girls on the run
- Alliance for Healthier Generation
- Volusia County Schools- VCS Wellness Policy
- SHAC – School Health Advisory
- Action for Healthy Kids
- Healthy Volusia
- Team Red White and Blue
- County and City Recreation Departments
- Mayor's Fitness Challenges
- Worksite Wellness - <http://www.funcoastwwc.org/>

**What more could/should be done to successfully address HEALTHY EATING & PHYSICAL ACTIVITY in Volusia County?**

- Encourage people to try new activities, perhaps through scholarships
- Encourage entrepreneurship in starting farmer's markets
- Walkability enhancements (sidewalks, etc.)
- Fitness challenges
- Offer local tax credits for coaching, teaching, participating in exercise activities
- Address food desert issues
- Coordinated after school activities
- Apply for grant opportunities to promote healthy eating & physical activity
- Set Goals for nutritional education
- Coordinate efforts and programs that exist in the community & district
- Cross county trail/bike path that is accessible
- Outreach to adults that DO NOT have children.
- Fit-bit "type" challenges on a county wide scale. May also be options for smart phones.
- Healthy diet is a direct link to various medical issues. Community Paramedicine interacts with patients with known issues in a one-on-one basis at their home
- Policy changes and incentives/fines for health living (healthy BMI should carry same weight as non-smoker